

Datasheet for ABIN7123791

LSM1 Protein (AA 1-133) (His tag)[Go to Product page](#)**1** Image

Overview

Quantity:	50 µg
Target:	LSM1
Protein Characteristics:	AA 1-133
Origin:	Human
Source:	Escherichia coli (E. coli)
Protein Type:	Recombinant
Purification tag / Conjugate:	This LSM1 protein is labelled with His tag.
Application:	ELISA, Western Blotting (WB)

Product Details

Purity:	Greater than 95 % as determined by SDS-PAGE
Sterility:	0.2 µm filtered

Target Details

Target:	LSM1
Alternative Name:	LSM1 (LSM1 Products)
Background:	Cancer associated Sm like protein, Cancer associated Sm-like, Cancer-associated Sm-like, CASM, lsm1, LSM1 antibody, LSM1 homolog, U6 small nuclear RNA associated (S. cerevisiae), Lsm1 protein, LSM1, U6 small nuclear RNA associated, LSM1_HUMAN, Small nuclear ribonuclear CaSm
Molecular Weight:	14.5 kDa

Target Details

UniProt: [O15116](#)

Application Details

Application Notes: Optimal working dilution should be determined by the investigator.

Restrictions: For Research Use only

Handling

Format: Lyophilized

Reconstitution: Centrifuge the vial at 10,000 rpm for 1 minute, reconstitute at 200 µg/mL in sterile distilled water by gentle pipetting 2-3 times, don't vortex

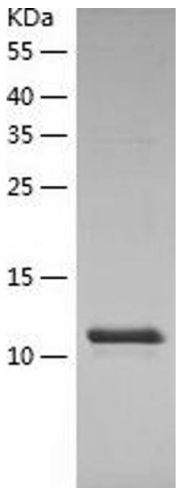
Buffer: Lyophilized from a 0.2 µm filtered solution in 10 mM Hepes, 500 mM NaCl with 5 % trehalose, pH 7.4

Storage: 4 °C, -20 °C

Storage Comment: -20°C for 12 months as lyophilized, 2-8°C for 1 month under sterile conditions after reconstitution

Expiry Date: 12 months

Images



Western Blotting

Image 1.