



[Go to Product page](#)

Datasheet for ABIN7123798

LY6D Protein (AA 21-98) (His tag)

1 Image

Overview

Quantity:	50 µg
Target:	LY6D
Protein Characteristics:	AA 21-98
Origin:	Human
Source:	Escherichia coli (E. coli)
Protein Type:	Recombinant
Purification tag / Conjugate:	This LY6D protein is labelled with His tag.
Application:	ELISA, Western Blotting (WB)

Product Details

Purity:	Greater than 95 % by SDS-PAGE gel analyses
Sterility:	0.2 µm filtered

Target Details

Target:	LY6D
Alternative Name:	LY6D (LY6D Products)
Background:	E48, E48 antigen, Ly 61, Ly 6D, Ly61, Ly6d, Lymphocyte antigen 6 complex locus D, Lymphocyte antigen 6D, Thrombocyte B, Thymocyte B cell antigen
Molecular Weight:	10.3 kDa
UniProt:	Q14210

Application Details

Application Notes: Optimal working dilution should be determined by the investigator.

Restrictions: For Research Use only

Handling

Format: Lyophilized

Reconstitution: Centrifuge the vial at 10,000 rpm for 1 minute, reconstitute at 200 µg/mL in sterile distilled water by gentle pipetting 2-3 times, don't vortex

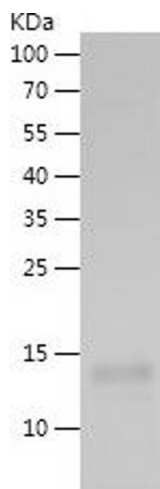
Buffer: Lyophilized from a 0.2 µm filtered solution in PBS with 5 % trehalose, pH 7.4

Storage: 4 °C,-20 °C

Storage Comment: -20°C for 12 months as lyophilized, 2-8°C for 1 month under sterile conditions after reconstitution

Expiry Date: 12 months

Images



Western Blotting

Image 1.