

Datasheet for ABIN7123824

MIF Protein (AA 1-115) (His tag)[Go to Product page](#)**1** Image

Overview

Quantity:	50 µg
Target:	MIF
Protein Characteristics:	AA 1-115
Origin:	Mouse
Source:	Escherichia coli (E. coli)
Protein Type:	Recombinant
Purification tag / Conjugate:	This MIF protein is labelled with His tag.
Application:	Western Blotting (WB), ELISA

Product Details

Purity:	Greater than 95 % as determined by SDS-PAGE
Sterility:	0.2 µm filtered

Target Details

Target:	MIF
Alternative Name:	MIF (MIF Products)
Background:	GIF, GLIF, Glycosylation inhibiting factor, Glycosylation-inhibiting factor, L-dopachrome isomerase, L-dopachrome tautomerase, Macrophage migration inhibitory factor, Macrophage migration inhibitory factor (glycosylation-inhibiting factor), MIF, MIF protein, MIF_HUMAN, MMIF, Phenylpyruvate tautomerase
Molecular Weight:	12.5 kDa

Target Details

UniProt:	P34884
Pathways:	Regulation of Systemic Arterial Blood Pressure by Hormones , Positive Regulation of Immune Effector Process , Production of Molecular Mediator of Immune Response , Regulation of Carbohydrate Metabolic Process , Feeding Behaviour , Smooth Muscle Cell Migration , Negative Regulation of intrinsic apoptotic Signaling

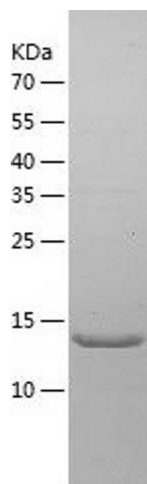
Application Details

Application Notes:	Optimal working dilution should be determined by the investigator.
Restrictions:	For Research Use only

Handling

Format:	Lyophilized
Reconstitution:	Centrifuge the vial at 10,000 rpm for 1 minute, reconstitute at 200 µg/mL in sterile distilled water by gentle pipetting 2-3 times, don't vortex
Buffer:	Lyophilized from a 0.2 µm filtered solution in 10 mM Hepes, 500 mM NaCl with 5 % trehalose, pH 7.4
Storage:	4 °C, -20 °C
Storage Comment:	-20°C for 12 months as lyophilized, 2-8°C for 1 month under sterile conditions after reconstitution
Expiry Date:	12 months

Images



Western Blotting

Image 1.