



[Go to Product page](#)

Datasheet for ABIN7123828

HLA-C Protein (AA 25-308) (His tag)

1 Image

Overview

Quantity:	50 µg
Target:	HLA-C
Protein Characteristics:	AA 25-308
Origin:	Human
Source:	Escherichia coli (E. coli)
Protein Type:	Recombinant
Purification tag / Conjugate:	This HLA-C protein is labelled with His tag.
Application:	Western Blotting (WB), ELISA

Product Details

Purity:	Greater than 95 % as determined by SDS-PAGE
Sterility:	0.2 µm filtered

Target Details

Target:	HLA-C
Alternative Name:	HLA-C (HLA-C Products)
Background:	1C07_HUMAN, Cw-7 alpha chain, D6S204, HLA class I histocompatibility antigen, HLA class I histocompatibility antigen, C alpha chain, HLA class I histocompatibility antigen, Cw-1 alpha chain, HLA JY3, HLA-C, HLA-C histocompatibility type, HLA-Cw, HLA-JY3, HLAC, HLC C, HLC-C
Molecular Weight:	31.1 kDa

Target Details

UniProt: [P10321](#)

Pathways: [Regulation of Leukocyte Mediated Immunity](#), [Positive Regulation of Immune Effector Process](#), [Human Leukocyte Antigen \(HLA\) in Adaptive Immune Response](#)

Application Details

Application Notes: Optimal working dilution should be determined by the investigator.

Restrictions: For Research Use only

Handling

Format: Lyophilized

Reconstitution: Centrifuge the vial at 10,000 rpm for 1 minute, reconstitute at 200 µg/mL in sterile distilled water by gentle pipetting 2-3 times, don't vortex

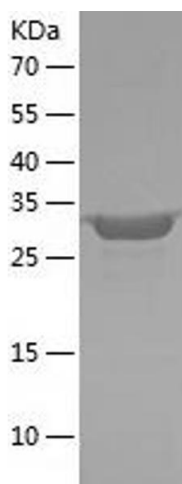
Buffer: Lyophilized from a 0.2 µm filtered solution in 10 mM Hepes, 500 mM NaCl with 5 % trehalose, pH 7.4

Storage: 4 °C, -20 °C

Storage Comment: -20°C for 12 months as lyophilized, 2-8°C for 1 month under sterile conditions after reconstitution

Expiry Date: 12 months

Images



Western Blotting

Image 1.