



[Go to Product page](#)

Datasheet for ABIN7123835

MDH2 Protein (AA 25-338) (His-IF2DI Tag)

1 Image

Overview

Quantity:	50 µg
Target:	MDH2
Protein Characteristics:	AA 25-338
Origin:	Human
Source:	Escherichia coli (E. coli)
Protein Type:	Recombinant
Purification tag / Conjugate:	This MDH2 protein is labelled with His-IF2DI Tag.
Application:	ELISA, Western Blotting (WB)

Product Details

Purity:	Greater than 95 % by SDS-PAGE gel analyses
Sterility:	0.2 µm filtered

Target Details

Target:	MDH2
Alternative Name:	MDH2 (MDH2 Products)
Background:	M MDH, Malate dehydrogenase, Malate dehydrogenase 2, NAD (mitochondrial), Malate dehydrogenase, mitochondrial, MDH, mdh2, MDHM_HUMAN, MGC:3559, mitochondrial, Mitochondrial malate dehydrogenase 2, NAD, Mor 1, MOR1
Molecular Weight:	53.6 kDa

Target Details

UniProt: [P40926](#)

Application Details

Application Notes: Optimal working dilution should be determined by the investigator.

Restrictions: For Research Use only

Handling

Format: Lyophilized

Reconstitution: Centrifuge the vial at 10,000 rpm for 1 minute, reconstitute at 200 µg/mL in sterile distilled water by gentle pipetting 2-3 times, don't vortex

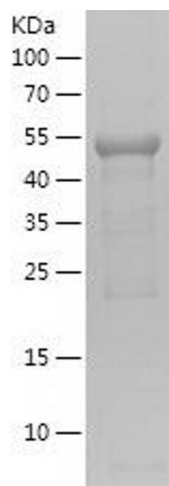
Buffer: Lyophilized from a 0.2 µm filtered solution in PBS with 5 % trehalose, pH 7.4

Storage: 4 °C, -20 °C

Storage Comment: -20°C for 12 months as lyophilized, 2-8°C for 1 month under sterile conditions after reconstitution

Expiry Date: 12 months

Images



Western Blotting

Image 1.