



[Go to Product page](#)

Datasheet for ABIN7123838

Malectin Protein (MLEC) (AA 29-269) (His tag)

1 Image

Overview

Quantity:	50 µg
Target:	Malectin (MLEC)
Protein Characteristics:	AA 29-269
Origin:	Human
Source:	Escherichia coli (E. coli)
Protein Type:	Recombinant
Purification tag / Conjugate:	This Malectin protein is labelled with His tag.
Application:	Western Blotting (WB), ELISA

Product Details

Purity:	Greater than 95 % as determined by SDS-PAGE
Sterility:	0.2 µm filtered

Target Details

Target:	Malectin (MLEC)
Alternative Name:	Malectin (MLEC Products)
Background:	KIAA0152, Malectin, Mlec, MLEC_HUMAN
Molecular Weight:	26.4 kDa
UniProt:	Q14165

Application Details

Application Notes: Optimal working dilution should be determined by the investigator.

Restrictions: For Research Use only

Handling

Format: Lyophilized

Reconstitution: Centrifuge the vial at 10,000 rpm for 1 minute, reconstitute at 200 µg/mL in sterile distilled water by gentle pipetting 2-3 times, don't vortex

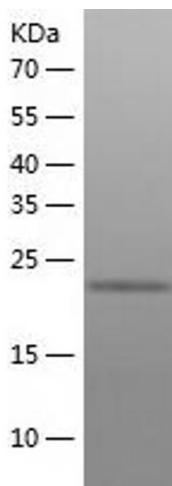
Buffer: Lyophilized from a 0.2 µm filtered solution in 10 mM Hepes, 500 mM NaCl with 5 % trehalose, pH 7.4

Storage: 4 °C, -20 °C

Storage Comment: -20°C for 12 months as lyophilized, 2-8°C for 1 month under sterile conditions after reconstitution

Expiry Date: 12 months

Images



Western Blotting

Image 1.