

Datasheet for ABIN7123839

**ME1 Protein (AA 226-572) (His tag)**[Go to Product page](#)**1** Image

## Overview

Quantity:	50 µg
Target:	ME1
Protein Characteristics:	AA 226-572
Origin:	Human
Source:	Escherichia coli (E. coli)
Protein Type:	Recombinant
Purification tag / Conjugate:	This ME1 protein is labelled with His tag.
Application:	ELISA, Western Blotting (WB)

## Product Details

Purity:	Greater than 95 % by SDS-PAGE gel analyses
Sterility:	0.2 µm filtered

## Target Details

Target:	ME1
Alternative Name:	ME1 ( <a href="#">ME1 Products</a> )
Background:	HUMNDME, Malic enzyme 1, ME1, MES, NADP dependent malic enzyme, NADP ME
Molecular Weight:	40 kDa
UniProt:	<a href="#">P48163</a>
Pathways:	<a href="#">Regulation of Lipid Metabolism by PPARalpha</a>

## Application Details

---

Application Notes: Optimal working dilution should be determined by the investigator.

Restrictions: For Research Use only

## Handling

---

Format: Lyophilized

Reconstitution: Centrifuge the vial at 10,000 rpm for 1 minute, reconstitute at 200 µg/mL in sterile distilled water by gentle pipetting 2-3 times, don't vortex

Buffer: Lyophilized from a 0.2 µm filtered solution in PBS with 5 % trehalose, pH 7.4

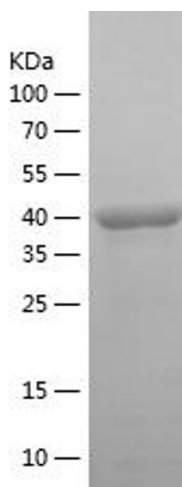
Storage: 4 °C, -20 °C

Storage Comment: -20°C for 12 months as lyophilized, 2-8°C for 1 month under sterile conditions after reconstitution

Expiry Date: 12 months

## Images

---



### Western Blotting

Image 1.