

Datasheet for ABIN7123916

MESDC1 Protein (AA 1-362) (His tag)[Go to Product page](#)**1** Image

Overview

Quantity:	50 µg
Target:	MESDC1
Protein Characteristics:	AA 1-362
Origin:	Human
Source:	Escherichia coli (E. coli)
Protein Type:	Recombinant
Purification tag / Conjugate:	This MESDC1 protein is labelled with His tag.
Application:	ELISA, Western Blotting (WB)

Product Details

Purity:	Greater than 95 % as determined by SDS-PAGE
Sterility:	0.2 µm filtered

Target Details

Target:	MESDC1
Alternative Name:	MESDC1 (MESDC1 Products)
Background:	MESD1_HUMAN, MESDC1, Mesoderm development candidate 1
Molecular Weight:	39.7 kDa
UniProt:	Q9H1K6

Application Details

Application Notes: Optimal working dilution should be determined by the investigator.

Restrictions: For Research Use only

Handling

Format: Lyophilized

Reconstitution: Centrifuge the vial at 10,000 rpm for 1 minute, reconstitute at 200 µg/mL in sterile distilled water by gentle pipetting 2-3 times, don't vortex

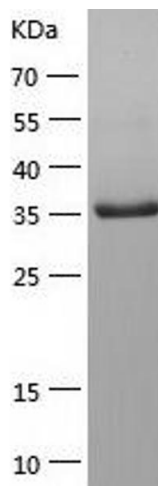
Buffer: Lyophilized from a 0.2 µm filtered solution in 10 mM Hepes, 500 mM NaCl with 5 % trehalose, pH 7.4

Storage: 4 °C, -20 °C

Storage Comment: -20°C for 12 months as lyophilized, 2-8°C for 1 month under sterile conditions after reconstitution

Expiry Date: 12 months

Images



Western Blotting

Image 1.