



Datasheet for ABIN7123920

c-MET Protein (AA 956-1080) (His-IF2DI Tag)



[Go to Product page](#)

1 Image

Overview

Quantity:	50 µg
Target:	c-MET (MET)
Protein Characteristics:	AA 956-1080
Origin:	Human
Source:	Escherichia coli (E. coli)
Protein Type:	Recombinant
Purification tag / Conjugate:	This c-MET protein is labelled with His-IF2DI Tag.
Application:	Western Blotting (WB), ELISA

Product Details

Purity:	Greater than 95 % by SDS-PAGE gel analyses
Sterility:	0.2 µm filtered

Target Details

Target:	c-MET (MET)
Alternative Name:	MET (MET Products)
Background:	AUTS9, c met, D249, Hepatocyte growth factor receptor, HGF, HGF receptor, HGF/SF receptor, HGFR, MET, Met proto oncogene, Met proto oncogene tyrosine kinase, MET proto oncogene, receptor tyrosine kinase, Met proto-oncogene, Met proto-oncogene (hepatocyte growth factor receptor)
Molecular Weight:	34.5 kDa

Target Details

UniProt: [P08581](#)

Pathways: [RTK Signaling](#), [Carbohydrate Homeostasis](#), [Synaptic Membrane](#), [Signaling of Hepatocyte Growth Factor Receptor](#)

Application Details

Application Notes: Optimal working dilution should be determined by the investigator.

Restrictions: For Research Use only

Handling

Format: Lyophilized

Reconstitution: Centrifuge the vial at 10,000 rpm for 1 minute, reconstitute at 200 µg/mL in sterile distilled water by gentle pipetting 2-3 times, don't vortex

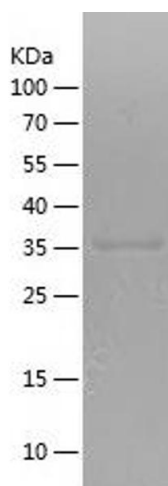
Buffer: Lyophilized from a 0.2 µm filtered solution in PBS with 5 % trehalose, pH 7.4

Storage: 4 °C, -20 °C

Storage Comment: -20°C for 12 months as lyophilized, 2-8°C for 1 month under sterile conditions after reconstitution

Expiry Date: 12 months

Images



Western Blotting

Image 1.