

Datasheet for ABIN7123922

MTDH Protein (AA 271-456) (His tag)[Go to Product page](#)**1** Image

Overview

| | |
|-------------------------------|---|
| Quantity: | 50 µg |
| Target: | MTDH |
| Protein Characteristics: | AA 271-456 |
| Origin: | Human |
| Source: | Escherichia coli (E. coli) |
| Protein Type: | Recombinant |
| Purification tag / Conjugate: | This MTDH protein is labelled with His tag. |
| Application: | Western Blotting (WB), ELISA |

Product Details

| | |
|------------|---|
| Purity: | Greater than 95 % as determined by SDS-PAGE |
| Sterility: | 0.2 µm filtered |

Target Details

| | |
|-------------------|---|
| Target: | MTDH |
| Alternative Name: | LYRIC (MTDH Products) |
| Background: | 3D3, 3D3/LYRIC, AEG 1, AEG-1, AEG1, Astrocyte elevated gene 1, Astrocyte elevated gene-1 protein, LYRIC, LYRIC/3D3, LYRIC_HUMAN, Lysine rich CEACAM1 associated protein, Lysine rich CEACAM1 co isolated protein, Lysine-rich CEACAM1 co-isolated protein, Metadherin, Metastasis adhesion protein, MTDH, Protein LYRIC |
| Molecular Weight: | 20.4 kDa |

Target Details

| | |
|-----------|---|
| UniProt: | Q86UE4 |
| Pathways: | Cellular Response to Molecule of Bacterial Origin , Cell-Cell Junction Organization |

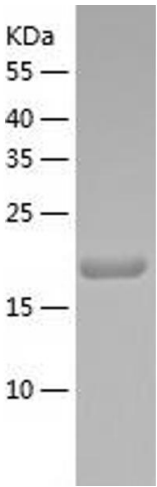
Application Details

| | |
|--------------------|--|
| Application Notes: | Optimal working dilution should be determined by the investigator. |
| Restrictions: | For Research Use only |

Handling

| | |
|------------------|--|
| Format: | Lyophilized |
| Reconstitution: | Centrifuge the vial at 10,000 rpm for 1 minute, reconstitute at 200 µg/mL in sterile distilled water by gentle pipetting 2-3 times, don't vortex |
| Buffer: | Lyophilized from a 0.2 µm filtered solution in 10 mM Hepes, 500 mM NaCl with 5 % trehalose, pH 7.4 |
| Storage: | 4 °C,-20 °C |
| Storage Comment: | -20°C for 12 months as lyophilized, 2-8°C for 1 month under sterile conditions after reconstitution |
| Expiry Date: | 12 months |

Images



Western Blotting

Image 1.