

Datasheet for ABIN7123923  
**MPPED2 Protein (AA 1-294) (His tag)**



[Go to Product page](#)

1 Image

## Overview

Quantity:	50 µg
Target:	MPPED2
Protein Characteristics:	AA 1-294
Origin:	Human
Source:	Escherichia coli (E. coli)
Protein Type:	Recombinant
Purification tag / Conjugate:	This MPPED2 protein is labelled with His tag.
Application:	ELISA, Western Blotting (WB)

## Product Details

Purity:	Greater than 95 % by SDS-PAGE gel analyses
Sterility:	0.2 µm filtered

## Target Details

Target:	MPPED2
Alternative Name:	MPPED2 ( <a href="#">MPPED2 Products</a> )
Background:	MPPED2, 239FB, Brain protein 239, C11orf8, Chromosome 11 open reading frame 8, D11S302E, dJ1024C24.1, dJ873F21.1, FAM 1B, FAM1B, Fetal brain protein 239, Hs.46638, Metallophosphoesterase domain containing 2, Metallophosphoesterase domain containing protein 2, MPPED 2
Molecular Weight:	35.2 kDa

## Target Details

---

UniProt: [Q15777](#)

## Application Details

---

Application Notes: Optimal working dilution should be determined by the investigator.

Restrictions: For Research Use only

## Handling

---

Format: Lyophilized

Reconstitution: Centrifuge the vial at 10,000 rpm for 1 minute, reconstitute at 200 µg/mL in sterile distilled water by gentle pipetting 2-3 times, don't vortex

Buffer: Lyophilized from a 0.2 µm filtered solution in PBS with 5 % trehalose, pH 7.4

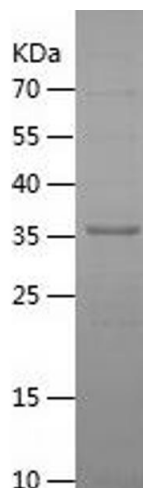
Storage: 4 °C, -20 °C

Storage Comment: -20°C for 12 months as lyophilized, 2-8°C for 1 month under sterile conditions after reconstitution

Expiry Date: 12 months

## Images

---



### Western Blotting

Image 1.