

Datasheet for ABIN7123943

**METTL1 Protein (AA 1-276) (His tag)**[Go to Product page](#)**1** Image

## Overview

Quantity:	50 µg
Target:	METTL1
Protein Characteristics:	AA 1-276
Origin:	Human
Source:	Escherichia coli (E. coli)
Protein Type:	Recombinant
Purification tag / Conjugate:	This METTL1 protein is labelled with His tag.
Application:	ELISA, Western Blotting (WB)

## Product Details

Purity:	Greater than 95 % as determined by SDS-PAGE
Sterility:	0.2 µm filtered

## Target Details

Target:	METTL1
Alternative Name:	METTL1 ( <a href="#">METTL1 Products</a> )
Background:	C12orf1, D1075 like gene product, FLJ95748, Methyltransferase like 1, Methyltransferase like protein 1, Methyltransferase-like protein 1, Mettl1, TRM8, TRMB_HUMAN, TRMT8, tRNA (guanine N(7) ) methyltransferase, tRNA (guanine(46)-N(7))-methyltransferase
Molecular Weight:	30.3 kDa

## Target Details

UniProt: Q9UBP6

## Application Details

Application Notes: Optimal working dilution should be determined by the investigator.

Restrictions: For Research Use only

## Handling

Format: Lyophilized

Reconstitution: Centrifuge the vial at 10,000 rpm for 1 minute, reconstitute at 200 µg/mL in sterile distilled water by gentle pipetting 2-3 times, don't vortex

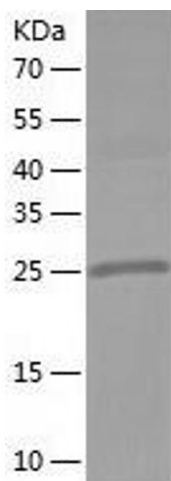
Buffer: Lyophilized from a 0.2 µm filtered solution in 10 mM Hepes, 500 mM NaCl with 5 % trehalose, pH 7.4

Storage: 4 °C,-20 °C

Storage Comment: -20°C for 12 months as lyophilized, 2-8°C for 1 month under sterile conditions after reconstitution

Expiry Date: 12 months

## Images



### Western Blotting

Image 1.