

Datasheet for ABIN7123944

**METTL11A Protein (AA 1-223) (His tag)**[Go to Product page](#)**1** Image

## Overview

Quantity:	50 µg
Target:	METTL11A
Protein Characteristics:	AA 1-223
Origin:	Human
Source:	Escherichia coli (E. coli)
Protein Type:	Recombinant
Purification tag / Conjugate:	This METTL11A protein is labelled with His tag.
Application:	ELISA, Western Blotting (WB)

## Product Details

Purity:	Greater than 95 % as determined by SDS-PAGE
Sterility:	0.2 µm filtered

## Target Details

Target:	METTL11A
Alternative Name:	METTL11A ( <a href="#">METTL11A Products</a> )
Background:	AD 003, Alpha N-terminal protein methyltransferase 1A, C9orf32, Chromosome 9 open reading frame 32, Methyltransferase like 11A, Methyltransferase-like protein 11A, Mettl11a, N-terminal RCC1 methyltransferase, NRMT, NTM1A, NTM1A_HUMAN, NTMT1, X-Pro-Lys N-terminal protein methyltransferase 1A
Molecular Weight:	24.4 kDa

## Target Details

UniProt: [Q9BV86](#)

## Application Details

Application Notes: Optimal working dilution should be determined by the investigator.

Restrictions: For Research Use only

## Handling

Format: Lyophilized

Reconstitution: Centrifuge the vial at 10,000 rpm for 1 minute, reconstitute at 200 µg/mL in sterile distilled water by gentle pipetting 2-3 times, don't vortex

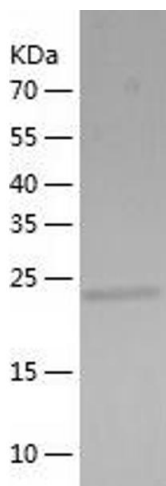
Buffer: Lyophilized from a 0.2 µm filtered solution in 10 mM Hepes, 500 mM NaCl with 5 % trehalose, pH 7.4

Storage: 4 °C,-20 °C

Storage Comment: -20°C for 12 months as lyophilized, 2-8°C for 1 month under sterile conditions after reconstitution

Expiry Date: 12 months

## Images



### Western Blotting

Image 1.