

Datasheet for ABIN7123946
Methyltransferase Like 21D (METTL21D) (AA 1-229) protein (His tag)



[Go to Product page](#)

1 Image

Overview

Quantity:	50 µg
Target:	Methyltransferase Like 21D (METTL21D)
Protein Characteristics:	AA 1-229
Origin:	Human
Source:	Escherichia coli (E. coli)
Protein Type:	Recombinant
Purification tag / Conjugate:	His tag
Application:	ELISA, Western Blotting (WB)

Product Details

Purity:	Greater than 95 % as determined by SDS-PAGE
Sterility:	0.2 µm filtered

Target Details

Target:	Methyltransferase Like 21D (METTL21D)
Alternative Name:	METTL21D (METTL21D Products)
Background:	C14orf138, Methyltransferase like 21D, Methyltransferase-like protein 21D, Mettl21d, MT21D_HUMAN, Protein lysine methyltransferase METTL21D, Valosin containing protein lysine (K) methyltransferase, Valosin containing protein lysine methyltransferase, VCP KMT, VCP lysine methyltransferase, VCPKMT
Molecular Weight:	25.1 kDa

Target Details

UniProt: [Q9H867](#)

Application Details

Application Notes: Optimal working dilution should be determined by the investigator.

Restrictions: For Research Use only

Handling

Format: Lyophilized

Reconstitution: Centrifuge the vial at 10,000 rpm for 1 minute, reconstitute at 200 µg/mL in sterile distilled water by gentle pipetting 2-3 times, don't vortex

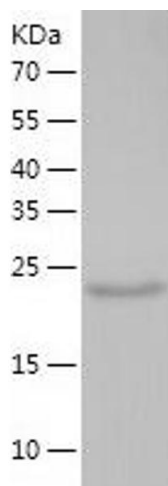
Buffer: Lyophilized from a 0.2 µm filtered solution in 10 mM Hepes, 500 mM NaCl with 5 % trehalose, pH 7.4

Storage: 4 °C, -20 °C

Storage Comment: -20°C for 12 months as lyophilized, 2-8°C for 1 month under sterile conditions after reconstitution

Expiry Date: 12 months

Images



Western Blotting

Image 1.