



[Go to Product page](#)

Datasheet for ABIN7123947

## METTL3 Protein (AA 397-580) (His-IF2DI Tag)

### 1 Image

#### Overview

Quantity:	50 µg
Target:	METTL3
Protein Characteristics:	AA 397-580
Origin:	Human
Source:	Escherichia coli (E. coli)
Protein Type:	Recombinant
Purification tag / Conjugate:	This METTL3 protein is labelled with His-IF2DI Tag.
Application:	ELISA, Western Blotting (WB)

#### Product Details

Purity:	Greater than 95 % by SDS-PAGE gel analyses
Sterility:	0.2 µm filtered

#### Target Details

Target:	METTL3
Alternative Name:	METTL3 ( <a href="#">METTL3 Products</a> )
Background:	AdoMet-binding subunit of the human mRNA (N6-adenosine)-methyltransferase, IME4, M6A, Methyltransferase like protein 3, Methyltransferase-like protein 3, METTL3, mRNA (2'-O-methyladenosine-N(6)-)-methyltransferase, mRNA m(6)A methyltransferase, MT-A70
Molecular Weight:	41.8 kDa

## Target Details

---

UniProt: [Q86U44](#)

## Application Details

---

Application Notes: Optimal working dilution should be determined by the investigator.

Restrictions: For Research Use only

## Handling

---

Format: Lyophilized

Reconstitution: Centrifuge the vial at 10,000 rpm for 1 minute, reconstitute at 200 µg/mL in sterile distilled water by gentle pipetting 2-3 times, don't vortex

Buffer: Lyophilized from a 0.2 µm filtered solution in PBS with 5 % trehalose, pH 7.4

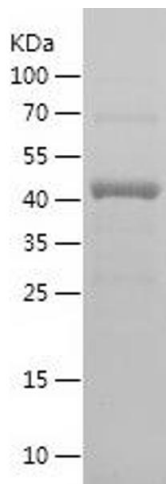
Storage: 4 °C, -20 °C

Storage Comment: -20°C for 12 months as lyophilized, 2-8°C for 1 month under sterile conditions after reconstitution

Expiry Date: 12 months

## Images

---



### Western Blotting

Image 1.