

Datasheet for ABIN7123965  
**MAPRE2 Protein (AA 1-327) (His tag)**



[Go to Product page](#)

1 Image

## Overview

Quantity:	50 µg
Target:	MAPRE2
Protein Characteristics:	AA 1-327
Origin:	Human
Source:	Escherichia coli (E. coli)
Protein Type:	Recombinant
Purification tag / Conjugate:	This MAPRE2 protein is labelled with His tag.
Application:	ELISA, Western Blotting (WB)

## Product Details

Purity:	Greater than 95 % as determined by SDS-PAGE
Sterility:	0.2 µm filtered

## Target Details

Target:	MAPRE2
Alternative Name:	EB2 ( <a href="#">MAPRE2 Products</a> )
Background:	APC binding protein EB1, APC binding protein EB2, APC-binding protein EB2, EB1, EB2, End binding protein 2, End-binding protein 2, H.sapiens mRNA for novel T cell activation protein, MAPRE2, MARE2_HUMAN, Microtubule associated protein RP/EB family member 2
Molecular Weight:	35.9 kDa

## Target Details

---

UniProt: [Q15555](#)

## Application Details

---

Application Notes: Optimal working dilution should be determined by the investigator.

Restrictions: For Research Use only

## Handling

---

Format: Lyophilized

Reconstitution: Centrifuge the vial at 10,000 rpm for 1 minute, reconstitute at 200 µg/mL in sterile distilled water by gentle pipetting 2-3 times, don't vortex

Buffer: Lyophilized from a 0.2 µm filtered solution in 10 mM Hepes, 500 mM NaCl with 5 % trehalose, pH 7.4

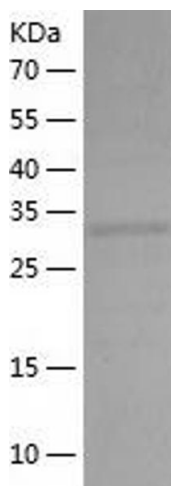
Storage: 4 °C, -20 °C

Storage Comment: -20°C for 12 months as lyophilized, 2-8°C for 1 month under sterile conditions after reconstitution

Expiry Date: 12 months

## Images

---



### Western Blotting

Image 1.