

Datasheet for ABIN7123966

**MAPRE3 Protein (AA 1-281) (His tag)**[Go to Product page](#)**1** Image

## Overview

Quantity:	50 µg
Target:	MAPRE3
Protein Characteristics:	AA 1-281
Origin:	Human
Source:	Escherichia coli (E. coli)
Protein Type:	Recombinant
Purification tag / Conjugate:	This MAPRE3 protein is labelled with His tag.
Application:	Western Blotting (WB), ELISA

## Product Details

Purity:	Greater than 95 % as determined by SDS-PAGE
Sterility:	0.2 µm filtered

## Target Details

Target:	MAPRE3
Alternative Name:	EB3 ( <a href="#">MAPRE3 Products</a> )
Background:	APC binding protein, EB 3, EB1 protein family member 3, EB3, EBF 3, EBF-3, EBF3, EBF3 S, End binding protein 3, End-binding protein 3, MAPRE 3, MAPRE3, MARE3_HUMAN, Member 3, Microtubule Associated Protein, Microtubule associated protein RP/EB family member 3
Molecular Weight:	30.8 kDa

Target Details

UniProt: Q9UPY8

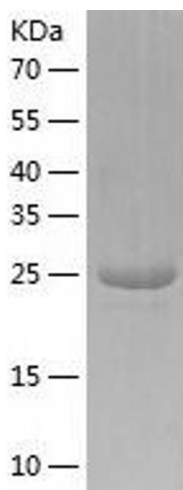
Application Details

Application Notes:	Optimal working dilution should be determined by the investigator.
Restrictions:	For Research Use only

Handling

Format:	Lyophilized
Reconstitution:	Centrifuge the vial at 10,000 rpm for 1 minute, reconstitute at 200 µg/mL in sterile distilled water by gentle pipetting 2-3 times, don't vortex
Buffer:	Lyophilized from a 0.2 µm filtered solution in 10 mM Hepes, 500 mM NaCl with 5 % trehalose, pH 7.4
Storage:	4 °C,-20 °C
Storage Comment:	-20°C for 12 months as lyophilized, 2-8°C for 1 month under sterile conditions after reconstitution
Expiry Date:	12 months

Images



Western Blotting

Image 1.