



[Go to Product page](#)

Datasheet for ABIN7124021

MORF4L1 Protein (AA 1-323) (His tag)

1 Image

Overview

Quantity:	50 µg
Target:	MORF4L1
Protein Characteristics:	AA 1-323
Origin:	Human
Source:	Escherichia coli (E. coli)
Protein Type:	Recombinant
Purification tag / Conjugate:	This MORF4L1 protein is labelled with His tag.
Application:	ELISA, Western Blotting (WB)

Product Details

Purity:	Greater than 95 % as determined by SDS-PAGE
Sterility:	0.2 µm filtered

Target Details

Target:	MORF4L1
Alternative Name:	MRG15 (MORF4L1 Products)
Background:	CG6363, Eaf3, Esa1p associated factor 3 homolog, FWP006, HsT17725, MEAF3, MO4L1_HUMAN, MORF related gene on chromosome 15, MORF-related gene 15 protein, Morf4l1, MORFRG15, Mortality factor 4 like 1, Mortality factor 4 like protein 1, Mortality factor 4-like protein 1, MRG15
Molecular Weight:	35.4 kDa

Target Details

UniProt: [Q9UBU8](#)

Pathways: [Chromatin Binding](#)

Application Details

Application Notes: Optimal working dilution should be determined by the investigator.

Restrictions: For Research Use only

Handling

Format: Lyophilized

Reconstitution: Centrifuge the vial at 10,000 rpm for 1 minute, reconstitute at 200 µg/mL in sterile distilled water by gentle pipetting 2-3 times, don't vortex

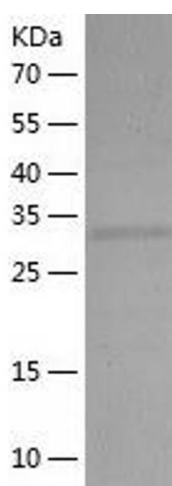
Buffer: Lyophilized from a 0.2 µm filtered solution in 10 mM Hepes, 500 mM NaCl with 5 % trehalose, pH 7.4

Storage: 4 °C, -20 °C

Storage Comment: -20°C for 12 months as lyophilized, 2-8°C for 1 month under sterile conditions after reconstitution

Expiry Date: 12 months

Images



Western Blotting

Image 1.