



[Go to Product page](#)

Datasheet for ABIN7124040

## MLF1 Protein (AA 1-268) (His tag)

### 1 Image

#### Overview

|                               |   |
|-------------------------------|---|
| Quantity:                     | 50 µg                                       |
| Target:                       | MLF1  |
| Protein Characteristics:      | AA 1-268                                    |
| Origin:                       | Human                                       |
| Source:                       | Escherichia coli (E. coli)                  |
| Protein Type:                 | Recombinant                                 |
| Purification tag / Conjugate: | This MLF1 protein is labelled with His tag. |
| Application:                  | ELISA, Western Blotting (WB)                |

#### Product Details

|            |  |
|------------|--|
| Purity:    | Greater than 95 % by SDS-PAGE gel analyses |
| Sterility: | 0.2 µm filtered                            |

#### Target Details

|                   |  |
|-------------------|--|
| Target:           | MLF1                                   |
| Alternative Name: | MLF1 ( <a href="#">MLF1 Products</a> ) |
| Background:       | MLF1, myeloid leukemia factor 1        |
| Molecular Weight: | 32.5 kDa                               |
| UniProt:          | <a href="#">P58340</a>                 |

## Application Details

---

Application Notes: Optimal working dilution should be determined by the investigator.

---

Restrictions: For Research Use only

---

## Handling

---

Format: Lyophilized

---

Reconstitution: Centrifuge the vial at 10,000 rpm for 1 minute, reconstitute at 200 µg/mL in sterile distilled water by gentle pipetting 2-3 times, don't vortex

---

Buffer: Lyophilized from a 0.2 µm filtered solution in PBS with 5 % trehalose, pH 7.4

---

Storage: 4 °C,-20 °C

---

Storage Comment: -20°C for 12 months as lyophilized, 2-8°C for 1 month under sterile conditions after reconstitution

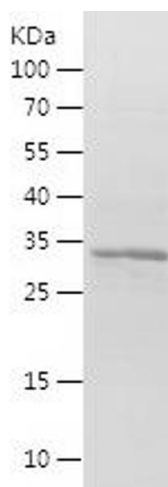
---

Expiry Date: 12 months

---

## Images

---



### Western Blotting

Image 1.