

Datasheet for ABIN7124063

MYL6 Protein (AA 1-151) (His tag)[Go to Product page](#)**1** Image

Overview

Quantity:	50 µg
Target:	MYL6
Protein Characteristics:	AA 1-151
Origin:	Human
Source:	Escherichia coli (E. coli)
Protein Type:	Recombinant
Purification tag / Conjugate:	This MYL6 protein is labelled with His tag.
Application:	ELISA, Western Blotting (WB)

Product Details

Purity:	Greater than 95 % as determined by SDS-PAGE
Sterility:	0.2 µm filtered

Target Details

Target:	MYL6
Alternative Name:	MYL6 (MYL6 Products)
Background:	17 kDa myosin light chain, ESMLC, LC 17, LC17, LC17 GI, LC17 NM, LC17A, LC17B, MLC 3, MLC-3, MLC1SM, MLC3, MLC3NM, MLC3SM, MYL 6, MYL6, MYL6_HUMAN, Myosin light chain 3, Myosin light chain 6 alkali smooth muscle and non muscle, Myosin light chain A3
Molecular Weight:	16.5 kDa

Target Details

UniProt: [P60660](#)

Application Details

Application Notes: Optimal working dilution should be determined by the investigator.

Restrictions: For Research Use only

Handling

Format: Lyophilized

Reconstitution: Centrifuge the vial at 10,000 rpm for 1 minute, reconstitute at 200 µg/mL in sterile distilled water by gentle pipetting 2-3 times, don't vortex

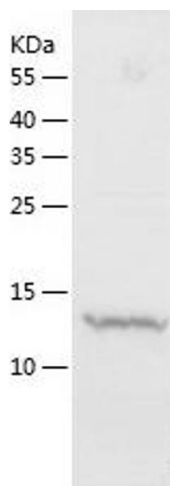
Buffer: Lyophilized from a 0.2 µm filtered solution in 10 mM Hepes, 500 mM NaCl with 5 % trehalose, pH 7.4

Storage: 4 °C, -20 °C

Storage Comment: -20°C for 12 months as lyophilized, 2-8°C for 1 month under sterile conditions after reconstitution

Expiry Date: 12 months

Images



Western Blotting

Image 1.