

Datasheet for ABIN7124167
NHP2L1 Protein (AA 1-128) (His tag)



[Go to Product page](#)

1 Image

Overview

Quantity:	50 µg
Target:	NHP2L1
Protein Characteristics:	AA 1-128
Origin:	Human
Source:	Escherichia coli (E. coli)
Protein Type:	Recombinant
Purification tag / Conjugate:	This NHP2L1 protein is labelled with His tag.
Application:	ELISA, Western Blotting (WB)

Product Details

Purity:	Greater than 95 % as determined by SDS-PAGE
Sterility:	0.2 µm filtered

Target Details

Target:	NHP2L1
Alternative Name:	NHP2L1 (NHP2L1 Products)
Background:	[U4/U6.U5] tri snRNP, 15.5 kD RNA binding protein, High mobility group like nuclear protein 2 homolog 1, hSNU13, NHP2 non histone chromosome protein 2 like 1 (S. cerevisiae), NHP2L 1, NHP2L1, NHPX, OTK27, SNU13
Molecular Weight:	14 kDa

Target Details

UniProt: [P55769](#)

Application Details

Application Notes: Optimal working dilution should be determined by the investigator.

Restrictions: For Research Use only

Handling

Format: Lyophilized

Reconstitution: Centrifuge the vial at 10,000 rpm for 1 minute, reconstitute at 200 µg/mL in sterile distilled water by gentle pipetting 2-3 times, don't vortex

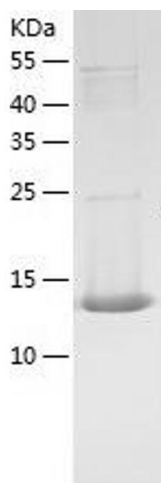
Buffer: Lyophilized from a 0.2 µm filtered solution in 10 mM Hepes, 500 mM NaCl with 5 % trehalose, pH 7.4

Storage: 4 °C, -20 °C

Storage Comment: -20°C for 12 months as lyophilized, 2-8°C for 1 month under sterile conditions after reconstitution

Expiry Date: 12 months

Images



Western Blotting

Image 1.