

Datasheet for ABIN7124270  
**ORC6 Protein (AA 1-252) (His tag)**[Go to Product page](#)

## 1 Image

## Overview

Quantity:	50 µg
Target:	ORC6
Protein Characteristics:	AA 1-252
Origin:	Human
Source:	Escherichia coli (E. coli)
Protein Type:	Recombinant
Purification tag / Conjugate:	This ORC6 protein is labelled with His tag.
Application:	ELISA, Western Blotting (WB)

## Product Details

Purity:	Greater than 95 % as determined by SDS-PAGE
Sterility:	0.2 µm filtered

## Target Details

Target:	ORC6
Alternative Name:	ORC6L ( <a href="#">ORC6 Products</a> )
Background:	ORC 6, Orc6, ORC6_HUMAN, ORC6L, Origin recognition complex subunit 6, origin recognition complex subunit 6 homolog like, origin recognition complex subunit 6 homolog like (yeast), origin recognition complex subunit 6 like (yeast)
Molecular Weight:	27.6 kDa

## Target Details

UniProt: [Q9Y5N6](#)

Pathways: [Mitotic G1-G1/S Phases, DNA Replication, M Phase, Synthesis of DNA](#)

## Application Details

Application Notes: Optimal working dilution should be determined by the investigator.

Restrictions: For Research Use only

## Handling

Format: Lyophilized

Reconstitution: Centrifuge the vial at 10,000 rpm for 1 minute, reconstitute at 200 µg/mL in sterile distilled water by gentle pipetting 2-3 times, don't vortex

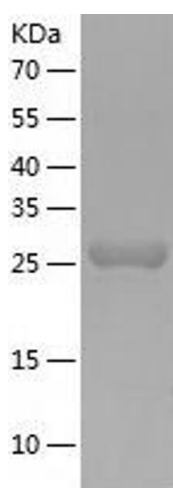
Buffer: Lyophilized from a 0.2 µm filtered solution in 10 mM Hepes, 500 mM NaCl with 5 % trehalose, pH 7.4

Storage: 4 °C, -20 °C

Storage Comment: -20°C for 12 months as lyophilized, 2-8°C for 1 month under sterile conditions after reconstitution

Expiry Date: 12 months

## Images



### Western Blotting

Image 1.