

Datasheet for ABIN7124407
PDE6D Protein (AA 1-150) (His tag)



[Go to Product page](#)

1 Image

Overview

Quantity:	50 µg
Target:	PDE6D
Protein Characteristics:	AA 1-150
Origin:	Human
Source:	Escherichia coli (E. coli)
Protein Type:	Recombinant
Purification tag / Conjugate:	This PDE6D protein is labelled with His tag.
Application:	ELISA, Western Blotting (WB)

Product Details

Purity:	Greater than 95 % as determined by SDS-PAGE
Sterility:	0.2 µm filtered

Target Details

Target:	PDE6D
Alternative Name:	PDE6D (PDE6D Products)
Background:	5"-cyclic phosphodiesterase subunit delta, GMP PDE delta, GMP-PDE delta, p17 protein, PDE 6, PDE 6D, PDE D, PDE6, PDE6D, PDE6D_HUMAN, PDED, Phosphodiesterase 6D cGMP specific, Phosphodiesterase 6D cGMP specific rod delta, Protein p17, Retinal rod photoreceptor cGMP phosphodiesterase delta
Molecular Weight:	16.4 kDa

Target Details

UniProt: [O43924](#)

Application Details

Application Notes: Optimal working dilution should be determined by the investigator.

Restrictions: For Research Use only

Handling

Format: Lyophilized

Reconstitution: Centrifuge the vial at 10,000 rpm for 1 minute, reconstitute at 200 µg/mL in sterile distilled water by gentle pipetting 2-3 times, don't vortex

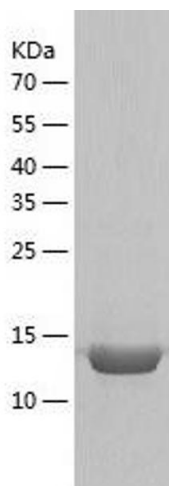
Buffer: Lyophilized from a 0.2 µm filtered solution in 10 mM Hepes, 500 mM NaCl with 5 % trehalose, pH 7.4

Storage: 4 °C, -20 °C

Storage Comment: -20°C for 12 months as lyophilized, 2-8°C for 1 month under sterile conditions after reconstitution

Expiry Date: 12 months

Images



Western Blotting

Image 1.