

Datasheet for ABIN7124434

PLSCR1 Protein (AA 1-288) (His tag)[Go to Product page](#)**1** Image

Overview

Quantity:	50 µg
Target:	PLSCR1
Protein Characteristics:	AA 1-288
Origin:	Human
Source:	Escherichia coli (E. coli)
Protein Type:	Recombinant
Purification tag / Conjugate:	This PLSCR1 protein is labelled with His tag.
Application:	Western Blotting (WB), ELISA

Product Details

Purity:	Greater than 95 % as determined by SDS-PAGE
Sterility:	0.2 µm filtered

Target Details

Target:	PLSCR1
Alternative Name:	Scramblase 1 (PLSCR1 Products)
Background:	Ca(2+) dependent phospholipid scramblase 1, Ca(2+)-dependent phospholipid scramblase 1, Erythrocyte phospholipid scramblase, MM1 cell-derived transplantability-associated gene 1b, mouse, homolog of, MmTRA1a, MmTRA1b, Nor1, Phospholipid scramblase 1, PL scramblase 1, PLS1_HUMAN, PLSCR 1
Molecular Weight:	31.6 kDa

Target Details

UniProt: [O15162](#)

Pathways: [Cellular Response to Molecule of Bacterial Origin](#)

Application Details

Application Notes: Optimal working dilution should be determined by the investigator.

Restrictions: For Research Use only

Handling

Format: Lyophilized

Reconstitution: Centrifuge the vial at 10,000 rpm for 1 minute, reconstitute at 200 µg/mL in sterile distilled water by gentle pipetting 2-3 times, don't vortex

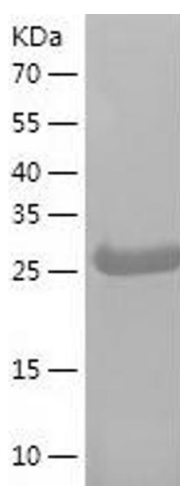
Buffer: Lyophilized from a 0.2 µm filtered solution in 10 mM Hepes, 500 mM NaCl with 5 % trehalose, pH 7.4

Storage: 4 °C, -20 °C

Storage Comment: -20°C for 12 months as lyophilized, 2-8°C for 1 month under sterile conditions after reconstitution

Expiry Date: 12 months

Images



Western Blotting

Image 1.