



[Go to Product page](#)

Datasheet for ABIN7124458

## PLGF Protein (AA 19-170) (His tag)

### 1 Image

#### Overview

Quantity:	50 µg
Target:	PLGF (PGF)
Protein Characteristics:	AA 19-170
Origin:	Human
Source:	Escherichia coli (E. coli)
Protein Type:	Recombinant
Purification tag / Conjugate:	This PLGF protein is labelled with His tag.
Application:	Western Blotting (WB), ELISA

#### Product Details

Purity:	Greater than 95 % as determined by SDS-PAGE
Sterility:	0.2 µm filtered

#### Target Details

Target:	PLGF (PGF)
Alternative Name:	PLGF ( <a href="#">PGF Products</a> )
Background:	D12S1900, Pgf, PGFL, PIGF, Placenta growth factor, Placental growth factor, Placental growth factor, vascular endothelial growth factor related protein, PIGF, PIGF 2, PLGF_HUMAN, PIGF2, SHGC 10760
Molecular Weight:	16.6 kDa

## Target Details

UniProt: [P49763](#)

Pathways: [VEGFR1 Specific Signals](#)

## Application Details

Application Notes: Optimal working dilution should be determined by the investigator.

Restrictions: For Research Use only

## Handling

Format: Lyophilized

Reconstitution: Centrifuge the vial at 10,000 rpm for 1 minute, reconstitute at 200 µg/mL in sterile distilled water by gentle pipetting 2-3 times, don't vortex

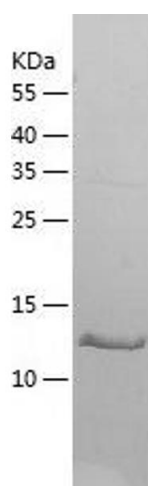
Buffer: Lyophilized from a 0.2 µm filtered solution in 10 mM Hepes, 500 mM NaCl with 5 % trehalose, pH 7.4

Storage: 4 °C, -20 °C

Storage Comment: -20°C for 12 months as lyophilized, 2-8°C for 1 month under sterile conditions after reconstitution

Expiry Date: 12 months

## Images



### Western Blotting

Image 1.