



[Go to Product page](#)

Datasheet for ABIN7124462

PLAC8 Protein (AA 1-115) (His-IF2DI Tag)

1 Image

Overview

Quantity:	50 µg
Target:	PLAC8
Protein Characteristics:	AA 1-115
Origin:	Human
Source:	Escherichia coli (E. coli)
Protein Type:	Recombinant
Purification tag / Conjugate:	This PLAC8 protein is labelled with His-IF2DI Tag.
Application:	ELISA, Western Blotting (WB)

Product Details

Purity:	Greater than 95 % by SDS-PAGE gel analyses
Sterility:	0.2 µm filtered

Target Details

Target:	PLAC8
Alternative Name:	PLAC8 (PLAC8 Products)
Background:	C15, Onzin, PLAC8, PLAC8_HUMAN, Placenta specific 8, Placenta-specific gene 8 protein, Protein C15
Molecular Weight:	33.1 kDa
UniProt:	Q9NZF1

Target Details

Pathways: [Brown Fat Cell Differentiation](#)

Application Details

Application Notes: Optimal working dilution should be determined by the investigator.

Restrictions: For Research Use only

Handling

Format: Lyophilized

Reconstitution: Centrifuge the vial at 10,000 rpm for 1 minute, reconstitute at 200 µg/mL in sterile distilled water by gentle pipetting 2-3 times, don't vortex

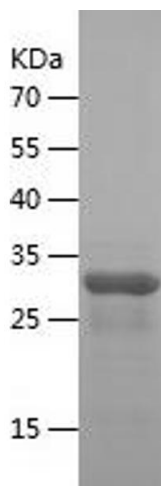
Buffer: Lyophilized from a 0.2 µm filtered solution in PBS with 5 % trehalose, pH 7.4

Storage: 4 °C, -20 °C

Storage Comment: -20°C for 12 months as lyophilized, 2-8°C for 1 month under sterile conditions after reconstitution

Expiry Date: 12 months

Images



Western Blotting

Image 1.