



[Go to Product page](#)

Datasheet for ABIN7124633

## PSMA2 Protein (AA 1-234) (His tag)

### 1 Image

#### Overview

Quantity:	50 µg
Target:	PSMA2
Protein Characteristics:	AA 1-234
Origin:	Human
Source:	Escherichia coli (E. coli)
Protein Type:	Recombinant
Purification tag / Conjugate:	This PSMA2 protein is labelled with His tag.
Application:	ELISA, Western Blotting (WB)

#### Product Details

Purity:	Greater than 95 % as determined by SDS-PAGE
Sterility:	0.2 µm filtered

#### Target Details

Target:	PSMA2
Alternative Name:	Proteasome 20S alpha 2 ( <a href="#">PSMA2 Products</a> )
Background:	HC3, Macropain subunit C3, MU, Multicatalytic endopeptidase complex subunit C3, PMSA2, Proteasome (prosome macropain) subunit alpha type 2, Proteasome alpha 2 subunit, Proteasome component C3, Proteasome subunit alpha type 2, Proteasome subunit alpha type-2
Molecular Weight:	25.6 kDa

## Target Details

UniProt: [P25787](#)

Pathways: [Mitotic G1-G1/S Phases](#), [DNA Replication](#), [Synthesis of DNA](#)

## Application Details

Application Notes: Optimal working dilution should be determined by the investigator.

Restrictions: For Research Use only

## Handling

Format: Lyophilized

Reconstitution: Centrifuge the vial at 10,000 rpm for 1 minute, reconstitute at 200 µg/mL in sterile distilled water by gentle pipetting 2-3 times, don't vortex

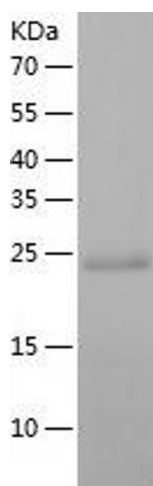
Buffer: Lyophilized from a 0.2 µm filtered solution in 10 mM Hepes, 500 mM NaCl with 5 % trehalose, pH 7.4

Storage: 4 °C, -20 °C

Storage Comment: -20°C for 12 months as lyophilized, 2-8°C for 1 month under sterile conditions after reconstitution

Expiry Date: 12 months

## Images



### Western Blotting

Image 1.