



[Go to Product page](#)

Datasheet for ABIN7124663

PPP1CC Protein (AA 2-323) (His tag)

1 Image

Overview

| | |
|-------------------------------|---|
| Quantity: | 50 µg |
| Target: | PPP1CC |
| Protein Characteristics: | AA 2-323 |
| Origin: | Human |
| Source: | Escherichia coli (E. coli) |
| Protein Type: | Recombinant |
| Purification tag / Conjugate: | This PPP1CC protein is labelled with His tag. |
| Application: | ELISA, Western Blotting (WB) |

Product Details

| | |
|------------|---|
| Purity: | Greater than 95 % as determined by SDS-PAGE |
| Sterility: | 0.2 µm filtered |

Target Details

| | |
|-------------------|--|
| Target: | PPP1CC |
| Alternative Name: | PP1C gamma (PPP1CC Products) |
| Background: | PP 1G, PP-1G, PP1C, PP1G, PP1G_HUMAN, PP1gamma, PPP 1G, PPP1CC, PPP1G, Protein phosphatase 1, catalytic subunit, gamma isozyme, Protein phosphatase 1C catalytic subunit, Serine/threonine phosphatase 1 gamma, Serine/threonine protein phosphatase PP1 gamma catalytic subunit |
| Molecular Weight: | 35.3 kDa |

Target Details

UniProt: [P36873](#)

Pathways: [Cellular Glucan Metabolic Process](#), [Lipid Metabolism](#)

Application Details

Application Notes: Optimal working dilution should be determined by the investigator.

Restrictions: For Research Use only

Handling

Format: Lyophilized

Reconstitution: Centrifuge the vial at 10,000 rpm for 1 minute, reconstitute at 200 µg/mL in sterile distilled water by gentle pipetting 2-3 times, don't vortex

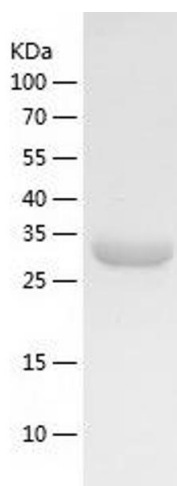
Buffer: Lyophilized from a 0.2 µm filtered solution in 10 mM Hepes, 500 mM NaCl with 5 % trehalose, pH 7.4

Storage: 4 °C, -20 °C

Storage Comment: -20°C for 12 months as lyophilized, 2-8°C for 1 month under sterile conditions after reconstitution

Expiry Date: 12 months

Images



Western Blotting

Image 1.