

Datasheet for ABIN7124667

PPP1R2 Protein (AA 1-166) (His tag)[Go to Product page](#)**1** Image

Overview

Quantity:	50 µg
Target:	PPP1R2
Protein Characteristics:	AA 1-166
Origin:	Human
Source:	Escherichia coli (E. coli)
Protein Type:	Recombinant
Purification tag / Conjugate:	This PPP1R2 protein is labelled with His tag.
Application:	ELISA, Western Blotting (WB)

Product Details

Purity:	Greater than 95 % as determined by SDS-PAGE
Sterility:	0.2 µm filtered

Target Details

Target:	PPP1R2
Alternative Name:	Phosphatase Inhibitor 2 (PPP1R2 Products)
Background:	IPP 2, IPP-2, IPP2, IPP2_HUMAN, MGC87148, Phosphatase inhibitor 2, Phosphoprotein phosphatase, Ppp1r2, PPP1R2 protein, Protein phosphatase 1 regulatory (inhibitor) subunit 2, Protein phosphatase 1 regulatory subunit 2, Protein phosphatase inhibitor 2
Molecular Weight:	18.2 kDa

Target Details

UniProt:	P41236
Pathways:	PI3K-Akt Signaling , Cellular Glucan Metabolic Process

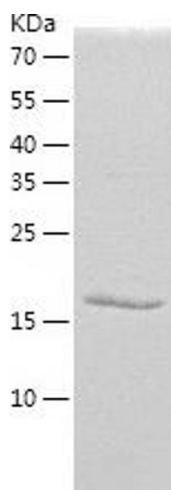
Application Details

Application Notes:	Optimal working dilution should be determined by the investigator.
Restrictions:	For Research Use only

Handling

Format:	Lyophilized
Reconstitution:	Centrifuge the vial at 10,000 rpm for 1 minute, reconstitute at 200 µg/mL in sterile distilled water by gentle pipetting 2-3 times, don't vortex
Buffer:	Lyophilized from a 0.2 µm filtered solution in 10 mM Hepes, 500 mM NaCl with 5 % trehalose, pH 7.4
Storage:	4 °C,-20 °C
Storage Comment:	-20°C for 12 months as lyophilized, 2-8°C for 1 month under sterile conditions after reconstitution
Expiry Date:	12 months

Images



Western Blotting

Image 1.