

Datasheet for ABIN7124673

**PPME1 Protein (AA 1-386) (His tag)**[Go to Product page](#)**1** Image

## Overview

Quantity:	50 µg
Target:	PPME1
Protein Characteristics:	AA 1-386
Origin:	Human
Source:	Escherichia coli (E. coli)
Protein Type:	Recombinant
Purification tag / Conjugate:	This PPME1 protein is labelled with His tag.
Application:	ELISA, Western Blotting (WB)

## Product Details

Purity:	Greater than 95 % as determined by SDS-PAGE
Sterility:	0.2 µm filtered

## Target Details

Target:	PPME1
Alternative Name:	PME-1 ( <a href="#">PPME1 Products</a> )
Background:	PME 1, PME-1, PME1, PPME1, PPME1_HUMAN, Protein phosphatase methylesterase 1, Testicular Secretory Protein Li 39
Molecular Weight:	42.4 kDa
UniProt:	<a href="#">Q9Y570</a>

## Target Details

Pathways: [Methionine Biosynthetic Process](#)

## Application Details

Application Notes: Optimal working dilution should be determined by the investigator.

Restrictions: For Research Use only

## Handling

Format: Lyophilized

Reconstitution: Centrifuge the vial at 10,000 rpm for 1 minute, reconstitute at 200 µg/mL in sterile distilled water by gentle pipetting 2-3 times, don't vortex

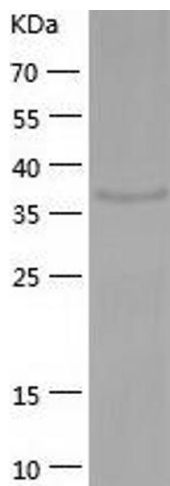
Buffer: Lyophilized from a 0.2 µm filtered solution in 10 mM Hepes, 500 mM NaCl with 5 % trehalose, pH 7.4

Storage: 4 °C,-20 °C

Storage Comment: -20°C for 12 months as lyophilized, 2-8°C for 1 month under sterile conditions after reconstitution

Expiry Date: 12 months

## Images



### Western Blotting

Image 1.