

Datasheet for ABIN7124674

PPM1G Protein (AA 1-546) (His tag)[Go to Product page](#)**1** Image

Overview

Quantity:	50 µg
Target:	PPM1G
Protein Characteristics:	AA 1-546
Origin:	Human
Source:	Escherichia coli (E. coli)
Protein Type:	Recombinant
Purification tag / Conjugate:	This PPM1G protein is labelled with His tag.
Application:	ELISA, Western Blotting (WB)

Product Details

Purity:	Greater than 95 % as determined by SDS-PAGE
Sterility:	0.2 µm filtered

Target Details

Target:	PPM1G
Alternative Name:	PPM1G (PPM1G Products)
Background:	MGC1675, MGC2870, OTTHUMP00000123426, PP2C, PP2C gamma, PP2C-gamma, PP2CG, PP2Cgamma, PPM1G, PPM1G_HUMAN, PPP2CG, Protein phosphatase 1C, Protein phosphatase 1G, Protein phosphatase 2 catalytic subunit gamma isoform, Protein phosphatase 2C gamma isoform, Protein phosphatase 2C isoform gamma
Molecular Weight:	60 kDa

Target Details

UniProt: [O15355](#)

Application Details

Application Notes: Optimal working dilution should be determined by the investigator.

Restrictions: For Research Use only

Handling

Format: Lyophilized

Reconstitution: Centrifuge the vial at 10,000 rpm for 1 minute, reconstitute at 200 µg/mL in sterile distilled water by gentle pipetting 2-3 times, don't vortex

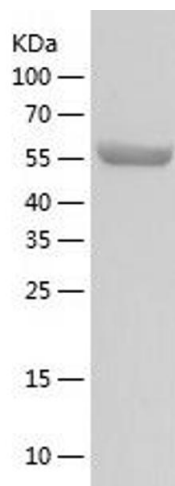
Buffer: Lyophilized from a 0.2 µm filtered solution in 10 mM Hepes, 500 mM NaCl with 5 % trehalose, pH 7.4

Storage: 4 °C, -20 °C

Storage Comment: -20°C for 12 months as lyophilized, 2-8°C for 1 month under sterile conditions after reconstitution

Expiry Date: 12 months

Images



Western Blotting

Image 1.