

Datasheet for ABIN7124737

RAB15 Protein (AA 2-212) (His tag)[Go to Product page](#)**1** Image

Overview

Quantity:	50 µg
Target:	RAB15
Protein Characteristics:	AA 2-212
Origin:	Human
Source:	Escherichia coli (E. coli)
Protein Type:	Recombinant
Purification tag / Conjugate:	This RAB15 protein is labelled with His tag.
Application:	ELISA, Western Blotting (WB)

Product Details

Purity:	Greater than 95 % as determined by SDS-PAGE
Sterility:	0.2 µm filtered

Target Details

Target:	RAB15
Alternative Name:	Rab15 (RAB15 Products)
Background:	Rab 15, RAB15, RAB15 member RAS oncogene family, RAB15, member RAS oncogene family, RAB15_HUMAN, Ras related protein Rab 15, Ras related protein Rab15, Ras-related protein Rab-15
Molecular Weight:	23.1 kDa

Target Details

UniProt: [P59190](#)

Application Details

Application Notes: Optimal working dilution should be determined by the investigator.

Restrictions: For Research Use only

Handling

Format: Lyophilized

Reconstitution: Centrifuge the vial at 10,000 rpm for 1 minute, reconstitute at 200 µg/mL in sterile distilled water by gentle pipetting 2-3 times, don't vortex

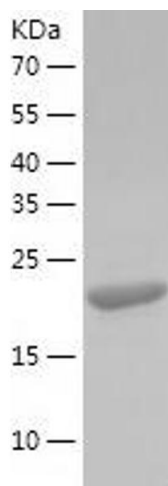
Buffer: Lyophilized from a 0.2 µm filtered solution in 10 mM Hepes, 500 mM NaCl with 5 % trehalose, pH 7.4

Storage: 4 °C, -20 °C

Storage Comment: -20°C for 12 months as lyophilized, 2-8°C for 1 month under sterile conditions after reconstitution

Expiry Date: 12 months

Images



Western Blotting

Image 1.