

Datasheet for ABIN7124747

RAB2B Protein (AA 1-216) (His tag)[Go to Product page](#)**1** Image

Overview

Quantity:	50 µg
Target:	RAB2B
Protein Characteristics:	AA 1-216
Origin:	Human
Source:	Escherichia coli (E. coli)
Protein Type:	Recombinant
Purification tag / Conjugate:	This RAB2B protein is labelled with His tag.
Application:	ELISA, Western Blotting (WB)

Product Details

Purity:	Greater than 95 % as determined by SDS-PAGE
Sterility:	0.2 µm filtered

Target Details

Target:	RAB2B
Alternative Name:	RAB2B (RAB2B Products)
Background:	FLJ14824, GTP binding protein RAB2B, GTP-binding protein RAB2B, RAB2B, RAB2B member RAS oncogene family, RAB2B_HUMAN, RAS family, member RAB2B, ras related protein Rab 2B, ras related protein Rab2B, Ras-related protein Rab-2B
Molecular Weight:	23.7 kDa

Target Details

UniProt: [Q8WUD1](#)

Application Details

Application Notes: Optimal working dilution should be determined by the investigator.

Restrictions: For Research Use only

Handling

Format: Lyophilized

Reconstitution: Centrifuge the vial at 10,000 rpm for 1 minute, reconstitute at 200 µg/mL in sterile distilled water by gentle pipetting 2-3 times, don't vortex

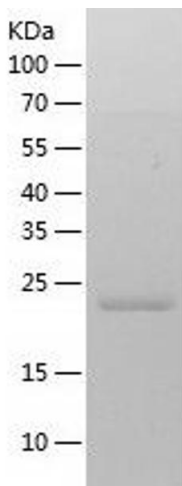
Buffer: Lyophilized from a 0.2 µm filtered solution in 10 mM Hepes, 500 mM NaCl with 5 % trehalose, pH 7.4

Storage: 4 °C,-20 °C

Storage Comment: -20°C for 12 months as lyophilized, 2-8°C for 1 month under sterile conditions after reconstitution

Expiry Date: 12 months

Images



Western Blotting

Image 1.