

Datasheet for ABIN7124776

RAP1A Protein (AA 1-181) (His tag)[Go to Product page](#)**1** Image

Overview

Quantity:	50 µg
Target:	RAP1A
Protein Characteristics:	AA 1-181
Origin:	Human
Source:	Escherichia coli (E. coli)
Protein Type:	Recombinant
Purification tag / Conjugate:	This RAP1A protein is labelled with His tag.
Application:	ELISA, Western Blotting (WB)

Product Details

Purity:	Greater than 95 % as determined by SDS-PAGE
Sterility:	0.2 µm filtered

Target Details

Target:	RAP1A
Alternative Name:	RAP1A (RAP1A Products)
Background:	C21KG, G 22K, G-22K, GTP binding protein smg p21A, GTP-binding protein smg p21A, KREV 1, KREV1, OTTHUMP00000013741, RAP 1A, RAP1, RAP1A, RAP1A member of RAS oncogene family, RAP1A_HUMAN, Ras related protein Krev 1, Ras related protein Rap 1A
Molecular Weight:	19.8 kDa

Target Details

UniProt:	P62834
Pathways:	TCR Signaling , Neurotrophin Signaling Pathway , Signaling of Hepatocyte Growth Factor Receptor

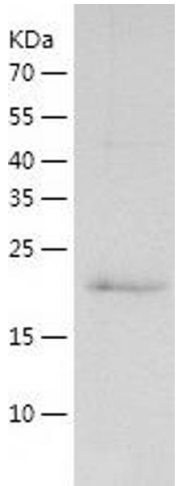
Application Details

Application Notes:	Optimal working dilution should be determined by the investigator.
Restrictions:	For Research Use only

Handling

Format:	Lyophilized
Reconstitution:	Centrifuge the vial at 10,000 rpm for 1 minute, reconstitute at 200 µg/mL in sterile distilled water by gentle pipetting 2-3 times, don't vortex
Buffer:	Lyophilized from a 0.2 µm filtered solution in 10 mM Hepes, 500 mM NaCl with 5 % trehalose, pH 7.4
Storage:	4 °C, -20 °C
Storage Comment:	-20°C for 12 months as lyophilized, 2-8°C for 1 month under sterile conditions after reconstitution
Expiry Date:	12 months

Images



Western Blotting

Image 1.