

Datasheet for ABIN7124804

**Recoverin Protein (RCVRN) (AA 1-202) (His tag)**[Go to Product page](#)**1** Image

## Overview

Quantity:	50 µg
Target:	Recoverin (RCVRN)
Protein Characteristics:	AA 1-202
Origin:	Mouse
Source:	Escherichia coli (E. coli)
Protein Type:	Recombinant
Purification tag / Conjugate:	This Recoverin protein is labelled with His tag.
Application:	Western Blotting (WB), ELISA

## Product Details

Purity:	Greater than 95 % as determined by SDS-PAGE
Sterility:	0.2 µm filtered

## Target Details

Target:	Recoverin (RCVRN)
Alternative Name:	Recoverin ( <a href="#">RCVRN Products</a> )
Background:	23 kDa photoreceptor cell-specific protein, Cancer associated retinopathy protein, Cancer-associated retinopathy protein, CAR, CAR protein, p26, Protein CAR, RCV1, RCVRN, RECO_HUMAN, Recoverin, S-modulin
Molecular Weight:	22.1 kDa

### Target Details

UniProt:	<a href="#">P34057</a>
Pathways:	<a href="#">Regulation of G-Protein Coupled Receptor Protein Signaling, Phototransduction</a>

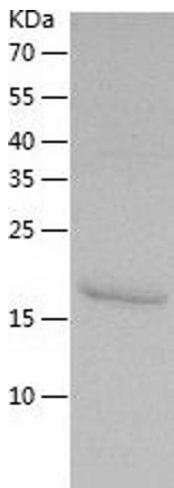
### Application Details

Application Notes:	Optimal working dilution should be determined by the investigator.
Restrictions:	For Research Use only

### Handling

Format:	Lyophilized
Reconstitution:	Centrifuge the vial at 10,000 rpm for 1 minute, reconstitute at 200 µg/mL in sterile distilled water by gentle pipetting 2-3 times, don't vortex
Buffer:	Lyophilized from a 0.2 µm filtered solution in 10 mM Hepes, 500 mM NaCl with 5 % trehalose, pH 7.4
Storage:	4 °C,-20 °C
Storage Comment:	-20°C for 12 months as lyophilized, 2-8°C for 1 month under sterile conditions after reconstitution
Expiry Date:	12 months

### Images



#### Western Blotting

Image 1.