

Datasheet for ABIN7124815
RGS16 Protein (AA 1-202) (His tag)[Go to Product page](#)

1 Image

Overview

Quantity:	50 µg
Target:	RGS16
Protein Characteristics:	AA 1-202
Origin:	Human
Source:	Escherichia coli (E. coli)
Protein Type:	Recombinant
Purification tag / Conjugate:	This RGS16 protein is labelled with His tag.
Application:	ELISA, Western Blotting (WB)

Product Details

Purity:	Greater than 95 % as determined by SDS-PAGE
Sterility:	0.2 µm filtered

Target Details

Target:	RGS16
Alternative Name:	RGS16 (RGS16 Products)
Background:	A28 RGS14, A28 RGS14P, A28-RGS14P, HGNC:9997, hRGS-r, OTTHUMP00000033147, Regulator of G protein signaling 16, Regulator of G protein signalling 16, Regulator of G-protein signaling 16, Retinal-specific RGS, Retinally abundant regulator of G protein signaling
Molecular Weight:	22.1 kDa

Target Details

UniProt:	O15492
Pathways:	Myometrial Relaxation and Contraction , Regulation of G-Protein Coupled Receptor Protein Signaling

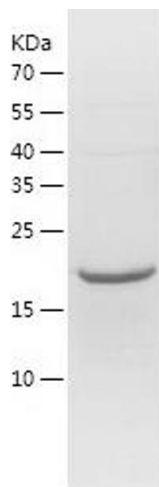
Application Details

Application Notes:	Optimal working dilution should be determined by the investigator.
Restrictions:	For Research Use only

Handling

Format:	Lyophilized
Reconstitution:	Centrifuge the vial at 10,000 rpm for 1 minute, reconstitute at 200 µg/mL in sterile distilled water by gentle pipetting 2-3 times, don't vortex
Buffer:	Lyophilized from a 0.2 µm filtered solution in 10 mM Hepes, 500 mM NaCl with 5 % trehalose, pH 7.4
Storage:	4 °C, -20 °C
Storage Comment:	-20°C for 12 months as lyophilized, 2-8°C for 1 month under sterile conditions after reconstitution
Expiry Date:	12 months

Images



Western Blotting

Image 1.