



[Go to Product page](#)

Datasheet for ABIN7124857

REXO1 Protein (AA 1060-1221) (His tag)

1 Image

Overview

Quantity:	50 µg
Target:	REXO1
Protein Characteristics:	AA 1060-1221
Origin:	Human
Source:	Escherichia coli (E. coli)
Protein Type:	Recombinant
Purification tag / Conjugate:	This REXO1 protein is labelled with His tag.
Application:	ELISA, Western Blotting (WB)

Product Details

Purity:	Greater than 95 % as determined by SDS-PAGE
Sterility:	0.2 µm filtered

Target Details

Target:	REXO1
Alternative Name:	REXO1 (REXO1 Products)
Background:	EloA BP1, ELOABP1, Elongin A binding protein 1, KIAA1138, REX1, RNA exonuclease 1 homolog (S. cerevisiae), RNA exonuclease 1 homolog, TCEB3BP1, Transcription elongation factor B polypeptide 3 binding protein 1
Molecular Weight:	17.7 kDa

Target Details

UniProt: [Q8N1G1](#)

Application Details

Application Notes: Optimal working dilution should be determined by the investigator.

Restrictions: For Research Use only

Handling

Format: Lyophilized

Reconstitution: Centrifuge the vial at 10,000 rpm for 1 minute, reconstitute at 200 µg/mL in sterile distilled water by gentle pipetting 2-3 times, don't vortex

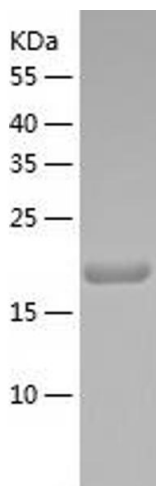
Buffer: Lyophilized from a 0.2 µm filtered solution in 10 mM Hepes, 500 mM NaCl with 5 % trehalose, pH 7.4

Storage: 4 °C, -20 °C

Storage Comment: -20°C for 12 months as lyophilized, 2-8°C for 1 month under sterile conditions after reconstitution

Expiry Date: 12 months

Images



Western Blotting

Image 1.