

Datasheet for ABIN7124879

RPL11 Protein (AA 1-178) (His tag)[Go to Product page](#)**1** Image

Overview

Quantity:	50 µg
Target:	RPL11
Protein Characteristics:	AA 1-178
Origin:	Human
Source:	Escherichia coli (E. coli)
Protein Type:	Recombinant
Purification tag / Conjugate:	This RPL11 protein is labelled with His tag.
Application:	ELISA, Western Blotting (WB)

Product Details

Purity:	Greater than 95 % as determined by SDS-PAGE
Sterility:	0.2 µm filtered

Target Details

Target:	RPL11
Alternative Name:	RPL11 (RPL11 Products)
Background:	60S ribosomal protein L11, Cell growth inhibiting protein 34, Cell growth inhibiting protein34, CLL associated antigen KW 12, CLL associated antigen KW12, CLL-associated antigen KW-12, DBA 7, DBA7, GIG 34, GIG34, L11, Ribosomal protein L11, RL11_HUMAN, RPL 11, Rpl11
Molecular Weight:	19.5 kDa

Target Details

UniProt: [P62913](#)

Application Details

Application Notes: Optimal working dilution should be determined by the investigator.

Restrictions: For Research Use only

Handling

Format: Lyophilized

Reconstitution: Centrifuge the vial at 10,000 rpm for 1 minute, reconstitute at 200 µg/mL in sterile distilled water by gentle pipetting 2-3 times, don't vortex

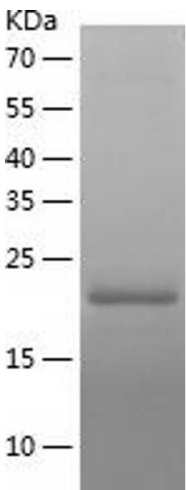
Buffer: Lyophilized from a 0.2 µm filtered solution in 10 mM Hepes, 500 mM NaCl with 5 % trehalose, pH 7.4

Storage: 4 °C, -20 °C

Storage Comment: -20°C for 12 months as lyophilized, 2-8°C for 1 month under sterile conditions after reconstitution

Expiry Date: 12 months

Images



Western Blotting

Image 1.