



[Go to Product page](#)

Datasheet for ABIN7124999

SECTM1 Protein (AA 69-248) (His-IF2DI Tag)

1 Image

Overview

Quantity:	50 µg
Target:	SECTM1
Protein Characteristics:	AA 69-248
Origin:	Human
Source:	Escherichia coli (E. coli)
Protein Type:	Recombinant
Purification tag / Conjugate:	This SECTM1 protein is labelled with His-IF2DI Tag.
Application:	Western Blotting (WB), ELISA

Product Details

Purity:	Greater than 95 % by SDS-PAGE gel analyses
Sterility:	0.2 µm filtered

Target Details

Target:	SECTM1
Alternative Name:	SECTM1 (SECTM1 Products)
Background:	K12, K12 protein, Protein K-12, Protein K12, SCTM1_HUMAN, Secreted and transmembrane 1, Secreted and transmembrane protein 1, SECTM 1, SECTM1, Type 1a transmembrane protein
Molecular Weight:	40 kDa
UniProt:	Q8WVN6

Application Details

Application Notes: Optimal working dilution should be determined by the investigator.

Restrictions: For Research Use only

Handling

Format: Lyophilized

Reconstitution: Centrifuge the vial at 10,000 rpm for 1 minute, reconstitute at 200 µg/mL in sterile distilled water by gentle pipetting 2-3 times, don't vortex

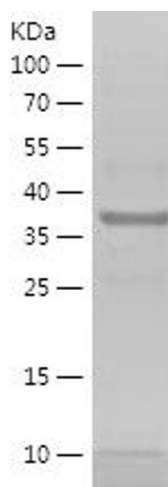
Buffer: Lyophilized from a 0.2 µm filtered solution in PBS with 5 % trehalose, pH 7.4

Storage: 4 °C,-20 °C

Storage Comment: -20°C for 12 months as lyophilized, 2-8°C for 1 month under sterile conditions after reconstitution

Expiry Date: 12 months

Images



Western Blotting

Image 1.