



[Go to Product page](#)

Datasheet for ABIN7125020

## SEMG1 Protein (AA 25-235) (His tag)

### 1 Image

#### Overview

Quantity:	50 µg
Target:	SEMG1
Protein Characteristics:	AA 25-235
Origin:	Human
Source:	Escherichia coli (E. coli)
Protein Type:	Recombinant
Purification tag / Conjugate:	This SEMG1 protein is labelled with His tag.
Application:	Western Blotting (WB), ELISA

#### Product Details

Purity:	Greater than 95 % by SDS-PAGE gel analyses
Sterility:	0.2 µm filtered

#### Target Details

Target:	SEMG1
Alternative Name:	SEMG1 ( <a href="#">SEMG1 Products</a> )
Background:	Alpha-Inhibin-31, Alpha-Inhibin-92, Cancer/testis antigen 103, CT103, dJ172H20.2, dJ172H20.2 (semenogelin I), MGC14719, Semen coagulating protein, Semenogelin, Semenogelin I, SEMG, SEMG1, SEMG1_HUMAN, Seminal basic protein, seminal vesicle secretory protein 5, Sgl, Svp-1, Svp5, SVPIIA, Svs2, SVS2P, Svs2p2, Svs5
Molecular Weight:	25 kDa

## Target Details

---

UniProt: [P04279](#)

## Application Details

---

Application Notes: Optimal working dilution should be determined by the investigator.

Restrictions: For Research Use only

## Handling

---

Format: Lyophilized

Reconstitution: Centrifuge the vial at 10,000 rpm for 1 minute, reconstitute at 200 µg/mL in sterile distilled water by gentle pipetting 2-3 times, don't vortex

Buffer: Lyophilized from a 0.2 µm filtered solution in PBS with 5 % trehalose, pH 7.4

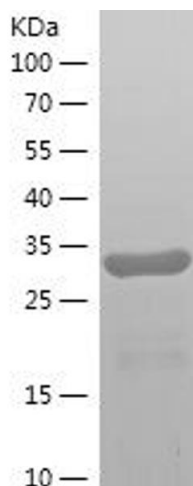
Storage: 4 °C, -20 °C

Storage Comment: -20°C for 12 months as lyophilized, 2-8°C for 1 month under sterile conditions after reconstitution

Expiry Date: 12 months

## Images

---



### Western Blotting

Image 1.