



[Go to Product page](#)

Datasheet for ABIN7125069

SETD1B Protein (AA 350-459) (His-IF2DI Tag)

1 Image

Overview

Quantity:	50 µg
Target:	SETD1B
Protein Characteristics:	AA 350-459
Origin:	Human
Source:	Escherichia coli (E. coli)
Protein Type:	Recombinant
Purification tag / Conjugate:	This SETD1B protein is labelled with His-IF2DI Tag.
Application:	ELISA, Western Blotting (WB)

Product Details

Purity:	Greater than 95 % by SDS-PAGE gel analyses
Sterility:	0.2 µm filtered

Target Details

Target:	SETD1B
Alternative Name:	SETD1B (SETD1B Products)
Background:	HSET1B, KIAA1076, KMT2G, Lysine N methyltransferase 2G, SET domain containing 1B, Set1B, SETD1B
Molecular Weight:	41.4 kDa
UniProt:	Q9UPS6

Application Details

Application Notes: Optimal working dilution should be determined by the investigator.

Restrictions: For Research Use only

Handling

Format: Lyophilized

Reconstitution: Centrifuge the vial at 10,000 rpm for 1 minute, reconstitute at 200 µg/mL in sterile distilled water by gentle pipetting 2-3 times, don't vortex

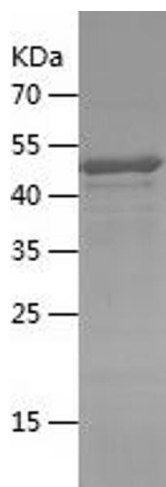
Buffer: Lyophilized from a 0.2 µm filtered solution in PBS with 5 % trehalose, pH 7.4

Storage: 4 °C,-20 °C

Storage Comment: -20°C for 12 months as lyophilized, 2-8°C for 1 month under sterile conditions after reconstitution

Expiry Date: 12 months

Images



Western Blotting

Image 1.