

Datasheet for ABIN7125072

ASH2L Protein (AA 96-628) (His tag)[Go to Product page](#)**1** Image

Overview

Quantity:	50 µg
Target:	ASH2L
Protein Characteristics:	AA 96-628
Origin:	Human
Source:	Escherichia coli (E. coli)
Protein Type:	Recombinant
Purification tag / Conjugate:	This ASH2L protein is labelled with His tag.
Application:	ELISA, Western Blotting (WB)

Product Details

Purity:	Greater than 95 % as determined by SDS-PAGE
Sterility:	0.2 µm filtered

Target Details

Target:	ASH2L
Alternative Name:	ASH2L (ASH2L Products)
Background:	ASH 2, ASH2, Ash2 (absent small or homeotic) like, Ash2 (absent, small, or homeotic) like (Drosophila), ASH2 LIKE, ASH2 like protein, ASH2-like protein, Ash2l, ASH2L_HUMAN, ASH2L1, ASH2L2, Bre 2, Bre2, Discs 2-like, Drosophila absent, small, or homeotic, Drosophila ASH2-like
Molecular Weight:	58.5 kDa

Target Details

UniProt: [Q9UBL3](#)

Application Details

Application Notes: Optimal working dilution should be determined by the investigator.

Restrictions: For Research Use only

Handling

Format: Lyophilized

Reconstitution: Centrifuge the vial at 10,000 rpm for 1 minute, reconstitute at 200 µg/mL in sterile distilled water by gentle pipetting 2-3 times, don't vortex

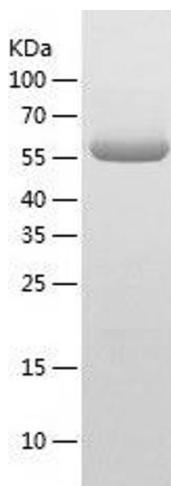
Buffer: Lyophilized from a 0.2 µm filtered solution in 10 mM Hepes, 500 mM NaCl with 5 % trehalose, pH 7.4

Storage: 4 °C,-20 °C

Storage Comment: -20°C for 12 months as lyophilized, 2-8°C for 1 month under sterile conditions after reconstitution

Expiry Date: 12 months

Images



Western Blotting

Image 1.