



[Go to Product page](#)

Datasheet for ABIN7125076

SH2D1A Protein (AA 1-128) (His tag)

1 Image

Overview

Quantity:	50 µg
Target:	SH2D1A
Protein Characteristics:	AA 1-128
Origin:	Human
Source:	Escherichia coli (E. coli)
Protein Type:	Recombinant
Purification tag / Conjugate:	This SH2D1A protein is labelled with His tag.
Application:	Western Blotting (WB), ELISA

Product Details

Purity:	Greater than 95 % as determined by SDS-PAGE
Sterility:	0.2 µm filtered

Target Details

Target:	SH2D1A
Alternative Name:	SH2D1A (SH2D1A Products)
Background:	DSHP, Duncan disease SH2 protein, Duncan disease SH2-protein, EBVS, IMD5, LYP, MTCP1, SAP, SAP/SH2D1A, SH2 domain containing 1A, SH2 domain protein 1A, SH2 domain-containing protein 1A, SH21A_HUMAN, SH2D1A, Signaling lymphocyte activation molecule associated protein
Molecular Weight:	14 kDa

Target Details

UniProt: [O60880](#)

Pathways: [Regulation of Leukocyte Mediated Immunity, Positive Regulation of Immune Effector Process](#)

Application Details

Application Notes: Optimal working dilution should be determined by the investigator.

Restrictions: For Research Use only

Handling

Format: Lyophilized

Reconstitution: Centrifuge the vial at 10,000 rpm for 1 minute, reconstitute at 200 µg/mL in sterile distilled water by gentle pipetting 2-3 times, don't vortex

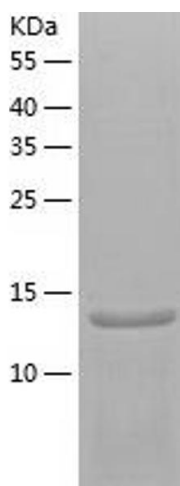
Buffer: Lyophilized from a 0.2 µm filtered solution in 10 mM Hepes, 500 mM NaCl with 5 % trehalose, pH 7.4

Storage: 4 °C, -20 °C

Storage Comment: -20°C for 12 months as lyophilized, 2-8°C for 1 month under sterile conditions after reconstitution

Expiry Date: 12 months

Images



Western Blotting

Image 1.