



[Go to Product page](#)

Datasheet for ABIN7125118
SLUG Protein (AA 1-268) (His tag)

1 Image

Overview

Quantity:	50 µg
Target:	SLUG
Protein Characteristics:	AA 1-268
Origin:	Human
Source:	Escherichia coli (E. coli)
Protein Type:	Recombinant
Purification tag / Conjugate:	This SLUG protein is labelled with His tag.
Application:	ELISA, Western Blotting (WB)

Product Details

Purity:	Greater than 95 % as determined by SDS-PAGE
Sterility:	0.2 µm filtered

Target Details

Target:	SLUG
Abstract:	SLUG Products
Background:	MGC10182, Neural crest transcription factor Slug, Protein snail homolog 2, Slug (chicken homolog) zinc finger protein, Slug homolog zinc finger protein, Slug zinc finger protein, SLUGH, SLUGH 1, SLUGH1, SNAI 2, Snai2, SNAI2_HUMAN, Snail 2, Snail homolog 2, Snail2, WS 2D, WS2D
Molecular Weight:	29.4 kDa

Target Details

UniProt: [O43623](#)

Application Details

Application Notes: Optimal working dilution should be determined by the investigator.

Restrictions: For Research Use only

Handling

Format: Lyophilized

Reconstitution: Centrifuge the vial at 10,000 rpm for 1 minute, reconstitute at 200 µg/mL in sterile distilled water by gentle pipetting 2-3 times, don't vortex

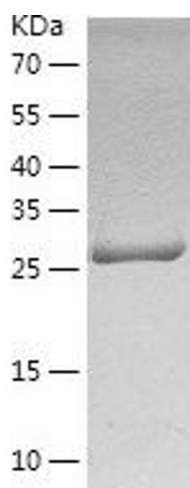
Buffer: Lyophilized from a 0.2 µm filtered solution in 10 mM Hepes, 500 mM NaCl with 5 % trehalose, pH 7.4

Storage: 4 °C,-20 °C

Storage Comment: -20°C for 12 months as lyophilized, 2-8°C for 1 month under sterile conditions after reconstitution

Expiry Date: 12 months

Images



Western Blotting

Image 1.