



[Go to Product page](#)

Datasheet for ABIN7125122

SMAD2 Protein (AA 2-467) (His tag)

1 Image

Overview

Quantity:	50 µg
Target:	SMAD2
Protein Characteristics:	AA 2-467
Origin:	Human
Source:	Escherichia coli (E. coli)
Protein Type:	Recombinant
Purification tag / Conjugate:	This SMAD2 protein is labelled with His tag.
Application:	Western Blotting (WB), ELISA

Product Details

Purity:	Greater than 95 % as determined by SDS-PAGE
Sterility:	0.2 µm filtered

Target Details

Target:	SMAD2
Alternative Name:	Smad2 (SMAD2 Products)
Background:	Drosophila, homolog of, MADR2, hMAD-2, HsMAD2, JV18, JV18-1, JV181, MAD, MAD homolog 2, MAD Related Protein 2, Mad-related protein 2, MADH2, MADR2, MGC22139, MGC34440, Mother against DPP homolog 2, Mothers against decapentaplegic homolog 2, Mothers against decapentaplegic
Molecular Weight:	51.2 kDa

Target Details

UniProt: [Q15796](#)

Pathways: [Cell Division Cycle](#), [Hormone Transport](#), [Chromatin Binding](#), [Protein targeting to Nucleus](#)

Application Details

Application Notes: Optimal working dilution should be determined by the investigator.

Restrictions: For Research Use only

Handling

Format: Lyophilized

Reconstitution: Centrifuge the vial at 10,000 rpm for 1 minute, reconstitute at 200 µg/mL in sterile distilled water by gentle pipetting 2-3 times, don't vortex

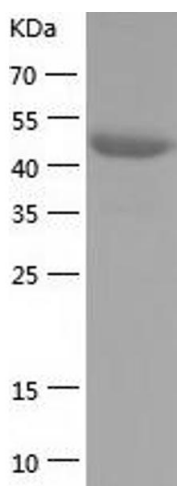
Buffer: Lyophilized from a 0.2 µm filtered solution in 10 mM Hepes, 500 mM NaCl with 5 % trehalose, pH 7.4

Storage: 4 °C, -20 °C

Storage Comment: -20°C for 12 months as lyophilized, 2-8°C for 1 month under sterile conditions after reconstitution

Expiry Date: 12 months

Images



Western Blotting

Image 1.