

Datasheet for ABIN7125125
SBEM Protein (AA 21-90) (His tag)[Go to Product page](#)

1 Image

Overview

Quantity:	50 µg
Target:	SBEM
Protein Characteristics:	AA 21-90
Origin:	Human
Source:	Escherichia coli (E. coli)
Protein Type:	Recombinant
Purification tag / Conjugate:	This SBEM protein is labelled with His tag.
Application:	Western Blotting (WB), ELISA

Product Details

Purity:	Greater than 95 % as determined by SDS-PAGE
Sterility:	0.2 µm filtered

Target Details

Target:	SBEM
Alternative Name:	SBEM (SBEM Products)
Background:	Mucin like 1, mucin-like 1, Mucin-like protein 1, MUCL1, MUCL1_HUMAN, Protein BS106, Small breast epithelial mucin
Molecular Weight:	7.6 kDa
UniProt:	Q96DR8

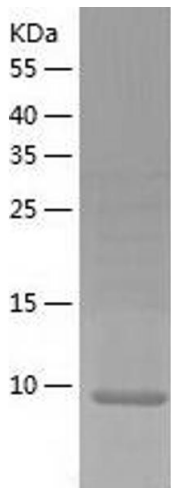
Application Details

Application Notes:	Optimal working dilution should be determined by the investigator.
Restrictions:	For Research Use only

Handling

Format:	Lyophilized
Reconstitution:	Centrifuge the vial at 10,000 rpm for 1 minute, reconstitute at 200 µg/mL in sterile distilled water by gentle pipetting 2-3 times, don't vortex
Buffer:	Lyophilized from a 0.2 µm filtered solution in 10 mM Hepes, 500 mM NaCl with 5 % trehalose, pH 7.4
Storage:	4 °C, -20 °C
Storage Comment:	-20°C for 12 months as lyophilized, 2-8°C for 1 month under sterile conditions after reconstitution
Expiry Date:	12 months

Images



Western Blotting

Image 1.