

Datasheet for ABIN7125164

SLC31A1 Protein (AA 1-190) (His tag)[Go to Product page](#)**1** Image

Overview

| | |
|-------------------------------|--|
| Quantity: | 50 µg |
| Target: | SLC31A1 |
| Protein Characteristics: | AA 1-190 |
| Origin: | Human |
| Source: | Escherichia coli (E. coli) |
| Protein Type: | Recombinant |
| Purification tag / Conjugate: | This SLC31A1 protein is labelled with His tag. |
| Application: | Western Blotting (WB), ELISA |

Product Details

| | |
|------------|---|
| Purity: | Greater than 95 % as determined by SDS-PAGE |
| Sterility: | 0.2 µm filtered |

Target Details

| | |
|-------------------|---|
| Target: | SLC31A1 |
| Alternative Name: | SLC31A1 (SLC31A1 Products) |
| Background: | Copper transport 1 homolog, Copper transporter 1, COPT1, COPT1_HUMAN, CTR1, hCTR1, High affinity copper uptake protein 1, SLC31A1, solute carrier family 31 (copper transporters) member 1, Solute carrier family 31 member 1 |
| Molecular Weight: | 20.8 kDa |

Target Details

UniProt: [O15431](#)

Application Details

Application Notes: Optimal working dilution should be determined by the investigator.

Restrictions: For Research Use only

Handling

Format: Lyophilized

Reconstitution: Centrifuge the vial at 10,000 rpm for 1 minute, reconstitute at 200 µg/mL in sterile distilled water by gentle pipetting 2-3 times, don't vortex

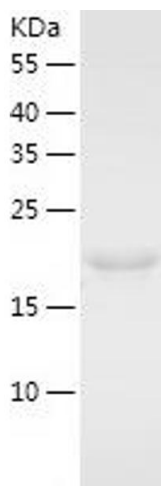
Buffer: Lyophilized from a 0.2 µm filtered solution in 10 mM Hepes, 500 mM NaCl with 5 % trehalose, pH 7.4

Storage: 4 °C, -20 °C

Storage Comment: -20°C for 12 months as lyophilized, 2-8°C for 1 month under sterile conditions after reconstitution

Expiry Date: 12 months

Images



Western Blotting

Image 1.