

Datasheet for ABIN7125192

**FAM33A Protein (AA 2-121) (His tag)**[Go to Product page](#)**1** Image

## Overview

Quantity:	50 µg
Target:	FAM33A
Protein Characteristics:	AA 2-121
Origin:	Human
Source:	Escherichia coli (E. coli)
Protein Type:	Recombinant
Purification tag / Conjugate:	This FAM33A protein is labelled with His tag.
Application:	ELISA, Western Blotting (WB)

## Product Details

Purity:	Greater than 95 % as determined by SDS-PAGE
Sterility:	0.2 µm filtered

## Target Details

Target:	FAM33A
Alternative Name:	SKA2 ( <a href="#">FAM33A Products</a> )
Background:	FAM33A, Family with sequence similarity 33, member A, FLJ12758, MGC110975, Protein FAM33A, SKA 2, SKA2, SKA2_HUMAN, Spindle and kinetochore associated complex subunit 2, Spindle and kinetochore associated protein 2, Spindle and kinetochore-associated protein 2
Molecular Weight:	13.1 kDa

Target Details

UniProt:	Q8WVK7
Pathways:	M Phase

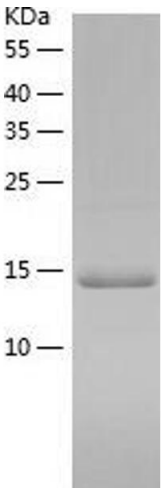
Application Details

Application Notes:	Optimal working dilution should be determined by the investigator.
Restrictions:	For Research Use only

Handling

Format:	Lyophilized
Reconstitution:	Centrifuge the vial at 10,000 rpm for 1 minute, reconstitute at 200 µg/mL in sterile distilled water by gentle pipetting 2-3 times, don't vortex
Buffer:	Lyophilized from a 0.2 µm filtered solution in 10 mM Hepes, 500 mM NaCl with 5 % trehalose, pH 7.4
Storage:	4 °C,-20 °C
Storage Comment:	-20°C for 12 months as lyophilized, 2-8°C for 1 month under sterile conditions after reconstitution
Expiry Date:	12 months

Images



Western Blotting

Image 1.