

Datasheet for ABIN7125220

SDF1 beta Protein (AA 22-93) (His tag)[Go to Product page](#)**1** Image

Overview

Quantity:	50 µg
Target:	SDF1 beta (SDF1b)
Protein Characteristics:	AA 22-93
Origin:	Mouse
Source:	Escherichia coli (E. coli)
Protein Type:	Recombinant
Purification tag / Conjugate:	This SDF1 beta protein is labelled with His tag.
Application:	ELISA, Western Blotting (WB)

Product Details

Purity:	Greater than 95 % as determined by SDS-PAGE
Sterility:	0.2 µm filtered

Target Details

Target:	SDF1 beta (SDF1b)
Alternative Name:	SDF1 beta (SDF1b Products)
Background:	C-X-C motif chemokine 12, cxcl12, hIRH, hSDF-1, Intercrine reduced in hepatomas, IRH, PBSF, Pre-B cell growth-stimulating factor, SCYB12, SDF 1 beta, SDF-1, SDF-1-alpha(3-67), SDF1, SDF1_HUMAN, SDF1b, Stromal cell derived factor 1, TLSF, TPAR1
Molecular Weight:	7.8 kDa

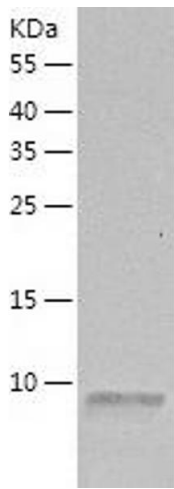
Application Details

Application Notes:	Optimal working dilution should be determined by the investigator.
Restrictions:	For Research Use only

Handling

Format:	Lyophilized
Reconstitution:	Centrifuge the vial at 10,000 rpm for 1 minute, reconstitute at 200 µg/mL in sterile distilled water by gentle pipetting 2-3 times, don't vortex
Buffer:	Lyophilized from a 0.2 µm filtered solution in 10 mM Hepes, 500 mM NaCl with 5 % trehalose, pH 7.4
Storage:	4 °C, -20 °C
Storage Comment:	-20°C for 12 months as lyophilized, 2-8°C for 1 month under sterile conditions after reconstitution
Expiry Date:	12 months

Images



Western Blotting

Image 1.