

Datasheet for ABIN7125226

SUMF1 Protein (AA 101-216) (His-IF2DI Tag)[Go to Product page](#)**1** Image

Overview

Quantity:	50 µg
Target:	SUMF1
Protein Characteristics:	AA 101-216
Origin:	Human
Source:	Escherichia coli (E. coli)
Protein Type:	Recombinant
Purification tag / Conjugate:	This SUMF1 protein is labelled with His-IF2DI Tag.
Application:	Western Blotting (WB), ELISA

Product Details

Purity:	Greater than 95 % by SDS-PAGE gel analyses
Sterility:	0.2 µm filtered

Target Details

Target:	SUMF1
Alternative Name:	SUMF1 (SUMF1 Products)
Background:	MGC150436, AAPA3037, C alpha formylglycine generating enzyme 1, C-alpha-formylglycine-generating enzyme 1, FGE, FGly generating enzyme, MGC131853, Sulfatase modifying factor 1 [Precursor], Sulfatase-modifying factor 1, SUMF1, SUMF1_HUMAN, UNQ3037
Molecular Weight:	33 kDa

Target Details

UniProt: [Q8NBK3](#)

Application Details

Application Notes: Optimal working dilution should be determined by the investigator.

Restrictions: For Research Use only

Handling

Format: Lyophilized

Reconstitution: Centrifuge the vial at 10,000 rpm for 1 minute, reconstitute at 200 µg/mL in sterile distilled water by gentle pipetting 2-3 times, don't vortex

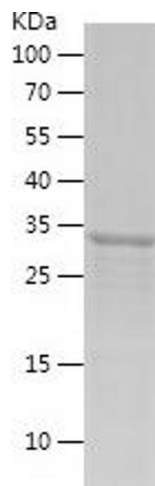
Buffer: Lyophilized from a 0.2 µm filtered solution in PBS with 5 % trehalose, pH 7.4

Storage: 4 °C, -20 °C

Storage Comment: -20°C for 12 months as lyophilized, 2-8°C for 1 month under sterile conditions after reconstitution

Expiry Date: 12 months

Images



Western Blotting

Image 1.